



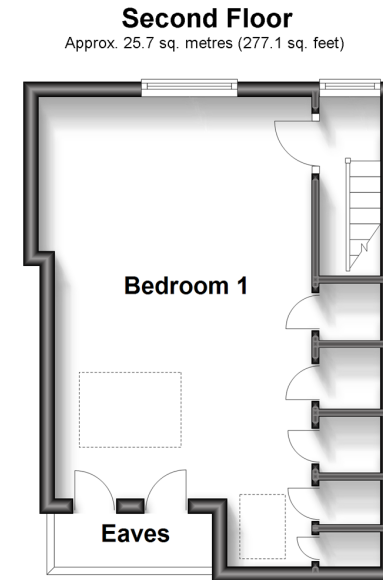
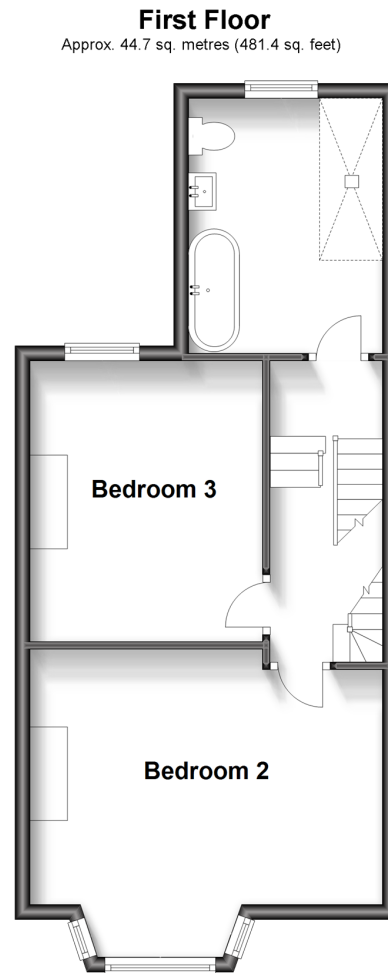
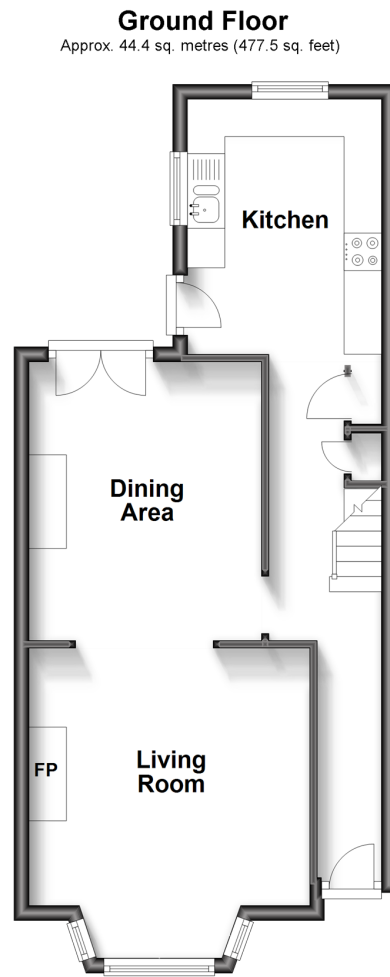
Virtual Reality Tour available

Guide Price
£600,000
Freehold

3x  1x  1x 

Yardley Street, Brighton, East Sussex, BN1

cubitt&west
Helping you move forwards



Accommodation

GROUND FLOOR

Entrance Hall

Living Room: 12'6 up to bay x 12'6
(3.81m x 3.81m)

Dining Area: 11'4 at widest point x 10'9
at widest point (3.46m x 3.28m)

Kitchen: 11'6 at widest point x 8'4 at
widest point (3.51m x 2.54m)

FIRST FLOOR

Landing

Bathroom

Bedroom 3: 11'2 x 8'7 (3.41m x 2.62m)

Bedroom 2: 15'6 x 10'9 up to bay
(4.73m x 3.28m)

SECOND FLOOR

Bedroom 1: 19'9 at widest point x 12'3
at widest point (6.02m x 3.74m)

OUTSIDE

Front & Rear Gardens



Main features

- Beautiful home located in quiet and friendly street close to Preston Circus
- Sunny rear garden
- Walking distance to two train stations
- Excellent schools and nurseries close by
- A short stroll through The Lanes to the city, the seafront and all of the fun Brighton has to offer



Nearest Schools

Primary Schools: Downs Junior School 0.2 miles, St Bartholomew's CofE Primary 0.3 miles, Stanford Junior School 0.4 miles
Secondary Schools: Brighton and Hove High School 0.8 miles, Cardinal Newman Catholic School 0.9 miles

Transport Information

Train Stations: London Road 0.0 miles, Brighton 0.4 miles, Preston Park 1.0 miles

Address

Yardley Street, Brighton, East Sussex, BN1

Directions

For directions to this property please contact us.





cubitt&west
Helping you move forwards

Call Fiveways Branch 01273 564444 ■ [cubittandwest.co.uk](https://www.cubittandwest.co.uk)



■ Legal advice should be taken to verify fixtures/fittings, planning, alterations and/or lease details ■ Appliances & services are untested, dimensions are approximate and floor plans are not to scale



30509689/20230812/AF/EM