



Price
£280,000

Leasehold

2x  1x  1x 

**Leahurst Court, Leahurst
Court Road, Brighton,
East Sussex, BN1**

cubitt&west
Helping you move forwards



Main features

- Well-proportioned apartment with space for a dining table in the kitchen
- Sunny balcony
- Unallocated parking permit available
- Moments from Preston Park train station
- No onward chain

Accommodation

FIRST FLOOR

Entrance Hall

Lounge : 17'11 x 12'0 (5.46m x 3.66m)

Balcony

Kitchen: 15'9 x 10'10 (4.80m x 3.30m)

Bedroom 1 : 12'1 x 11'10 (3.69m x 3.61m)

Bedroom 2: 11'2 x 8'10 (3.41m x 2.69m)

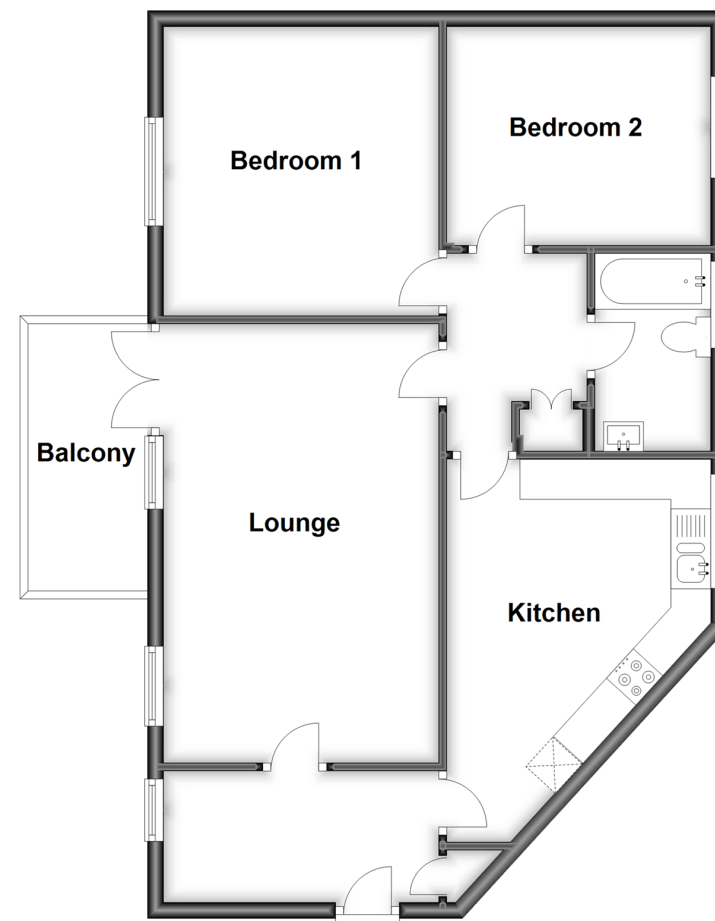
Bathroom

OUTSIDE

Off Road Parking

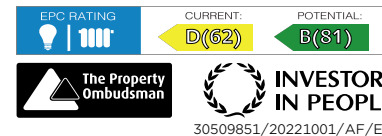
First Floor

Approx. 69.6 sq. metres (749.3 sq. feet)



Call Fiveways - 01273 564444 ■ cubittandwest.co.uk

- Legal advice should be taken to verify fixtures/fittings, planning, alterations and/or lease details
- Appliances & services are untested, dimensions are approximate and floor plans are not to scale



30509851/20221001/AF/EM