



Price

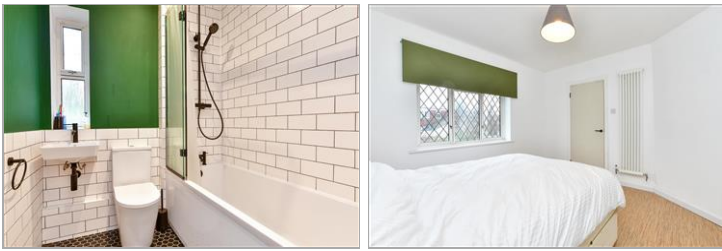
£775,000

Freehold

3x  1x  1x 

**Hollingbury Road,
Brighton, East Sussex,
BN1**

cubitt&west
Helping you move forwards



Main features

- Refurbished bungalow on large plot
- Off street parking for 2 vehicles
- Planning permission to develop the existing Bungalow into 2,400 sq/ft 2 storey home ref: BH2023/00096
- Planning permission for an additional detached 2/3 bed house ref: BH2022/01891
- No ongoing chain

Accommodation

GROUND FLOOR

Entrance Hall

Lounge/Kitchen : 21'3 x 15'9 (6.48m x 4.80m)

Bedroom 1 : 11'10 x 11'9 (3.61m x 3.58m)

Bedroom 2 : 15'11 x 7'9 (4.85m x 2.36m)

Bedroom 3 : 9'3 x 7'11 (2.82m x 2.41m)

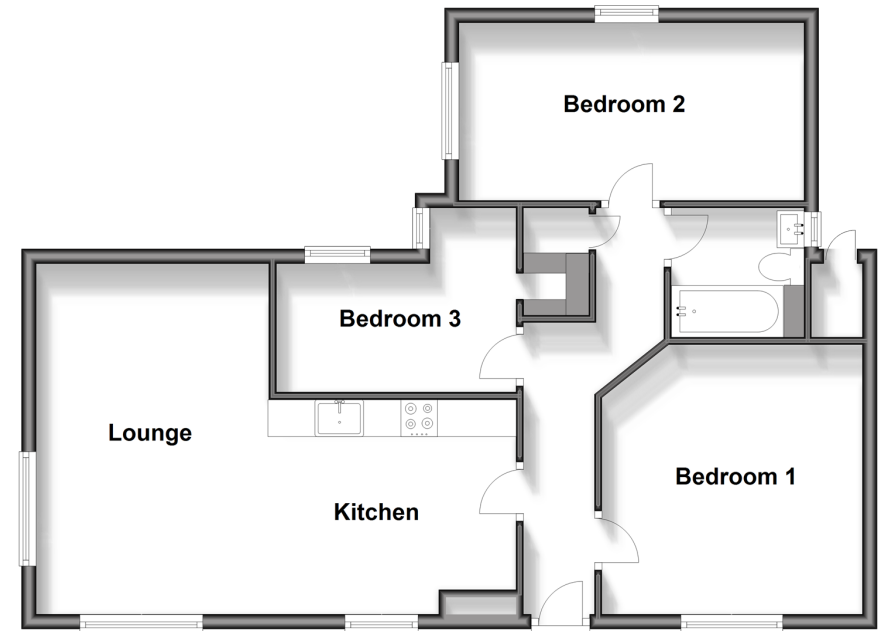
Bathroom

OUTSIDE

Driveway & Off Road Parking

Front, Side & Rear Garden

Ground Floor
Approx. 69.5 sq. metres (747.9 sq. feet)



Call Fiveways - 01273 564444 ■ [cubittandwest.co.uk](https://www.cubittandwest.co.uk)

- Legal advice should be taken to verify fixtures/fittings, planning, alterations and/or lease details
- Appliances & services are untested, dimensions are approximate and floor plans are not to scale



30510236/20240413/AF/JR