



Guide Price
£550,000

Freehold

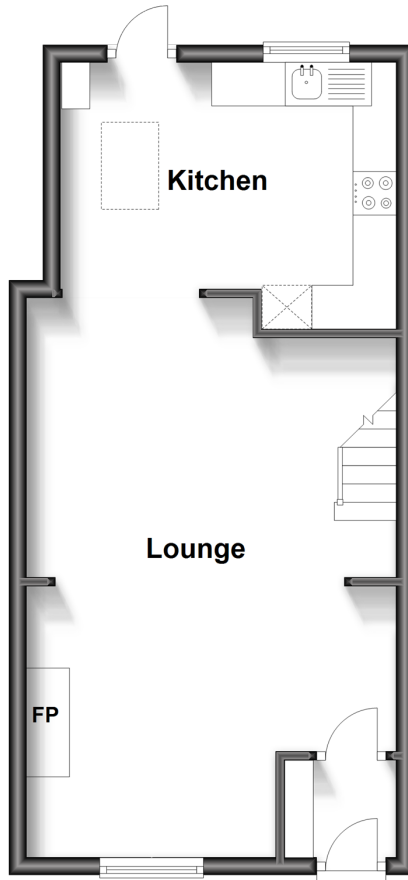
3x  2x  1x 

**Arnold Street, Brighton,
East Sussex, BN2**

cubitt&west
Helping you move forwards

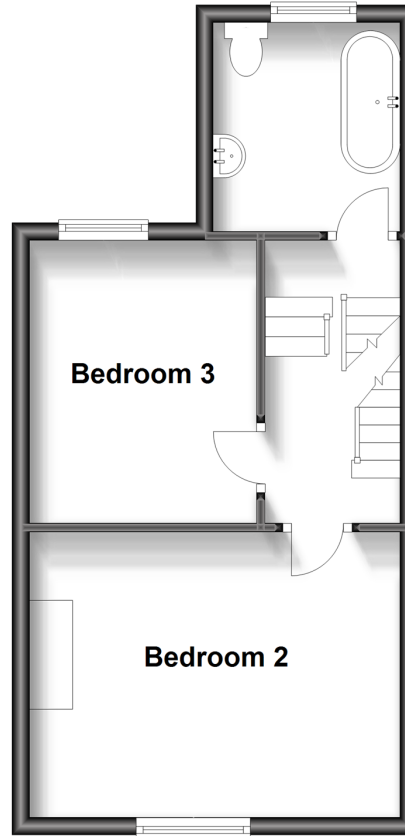
Ground Floor

Approx. 38.1 sq. metres (410.3 sq. feet)



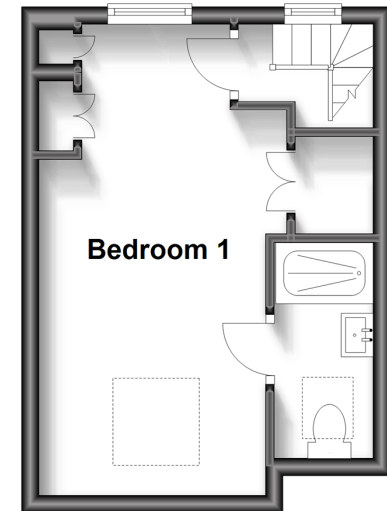
First Floor

Approx. 33.8 sq. metres (364.1 sq. feet)



Second Floor

Approx. 20.4 sq. metres (220.1 sq. feet)



Accommodation

GROUND FLOOR

Entrance Porch

Lounge : 21'5 x 14'0 (6.53m x 4.27m)

Kitchen : 12'8 x 10'7 (3.86m x 3.23m)

FIRST FLOOR

Landing

Bedroom 2 : 14'0 x 10'6 (4.27m x 3.20m)

Bedroom 3 : 11'3 x 8'8 (3.43m x 2.64m)

Bathroom

SECOND FLOOR

Landing

Bedroom 1: 17'5 x 8'7 (5.31m x 2.62m)

En Suite Shower Room

OUTSIDE

Rear Garden



Main features

- Large 3 storey family home in friendly street
- Beautifully decorated throughout with modern kitchen & bathroom
- Open plan social living/dining space
- Popular Hanover location close to Queens Park and great catchment area for outstanding schools
- Fantastic views over the roof tops and out to sea



Nearest Schools

Primary Schools: Elm Grove Primary 0.1 miles, St Luke's Junior School 0.4 miles, Fairlight Primary School 0.5 miles

Secondary Schools: Varndean High School 1.9 miles, Dorothy Stringer 2.3 miles, Brighton College 0.6 miles



Transport Information

Train Stations: London Road 1.1 miles, Brighton 1.1 miles, Moulsecomb 1.4 miles



Address

Arnold Street, Brighton, East Sussex, BN2



Directions

For directions to this property please contact us.



cubitt&west
Helping you move forwards

Call Lewes Road Brighton Branch 01273 604377 ■ cubittandwest.co.uk



■ Legal advice should be taken to verify fixtures/fittings, planning, alterations and/or lease details ■ Appliances & services are untested, dimensions are approximate and floor plans are not to scale



31317299/20230721/JR/JR