



Price
£270,000

Leasehold

1x  1x  1x 

**De Montfort Road,
Brighton, East Sussex,
BN2**

cubitt&west
Helping you move forwards



Main features

- Spacious apartment ready to move into
- Private entrance
- Large hallway, the perfect home office or dining space
- Popular location, close to Lewes Road and The Level
- Front & rear garden

Accommodation

LOWER GROUND FLOOR

Entrance Hall

Lounge : 14'8 into bay x 13'0
(4.47m x 3.97m)

Kitchen : 10'6 x 9'4 (3.20m x 2.85m)

Bedroom : 12'0 x 11'0 (3.66m x 3.36m)

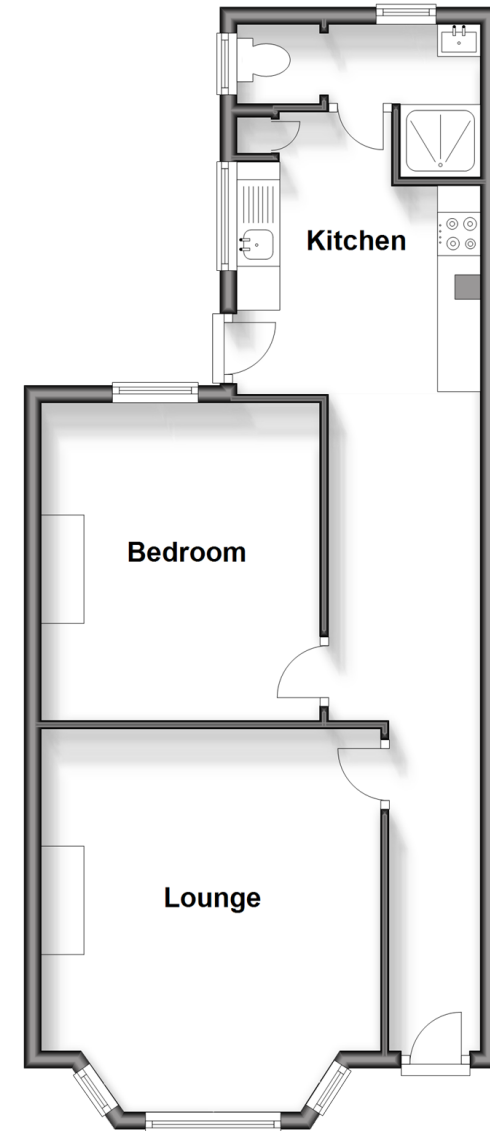
Shower Room

OUTSIDE

Rear Patio

Lower Ground Floor

Approx. 52.4 sq. metres (564.5 sq. feet)



Call Lewes Road Brighton - 01273 604377 ■ cubittandwest.co.uk

- Legal advice should be taken to verify fixtures/fittings, planning, alterations and/or lease details
- Appliances & services are untested, dimensions are approximate and floor plans are not to scale