



Price
£400,000

Freehold

2x  1x  2x 

**Carisbrooke Road,
Brighton, East Sussex,
BN2**

cubitt & west
Helping you move forwards



Main features

- Modern family home with large eat-in kitchen
- Open views across Brighton to the front, lovely sunsets in the evening
- Close to excellent schools
- Feature fireplaces
- Rear garden

Accommodation

GROUND FLOOR

Entrance Hall

Lounge : 13'9 x 10'9 (4.19m x 3.28m)

Kitchen: 14'1 x 11'3 (4.30m x 3.43m)

Utility Room

Bathroom

FIRST FLOOR

Landing

Bedroom 1 : 14'1 x 11'5 (4.30m x 3.48m)

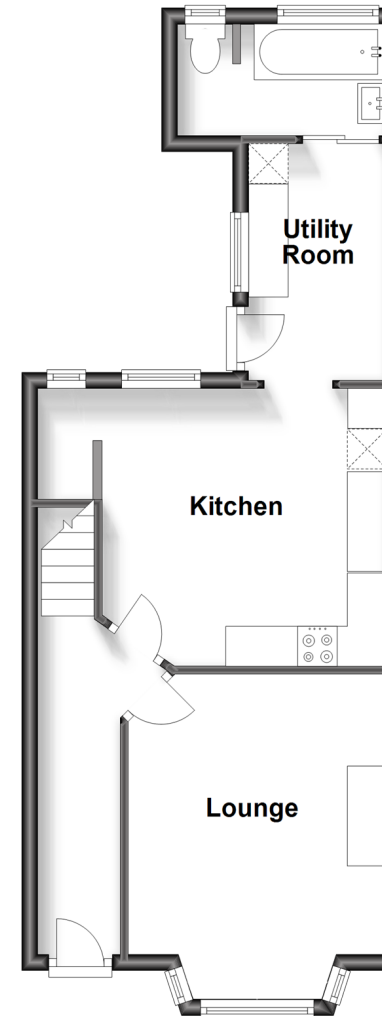
Bedroom 2 : 11'5 x 8'11 (3.48m x 2.72m)

OUTSIDE

Front & Rear Garden

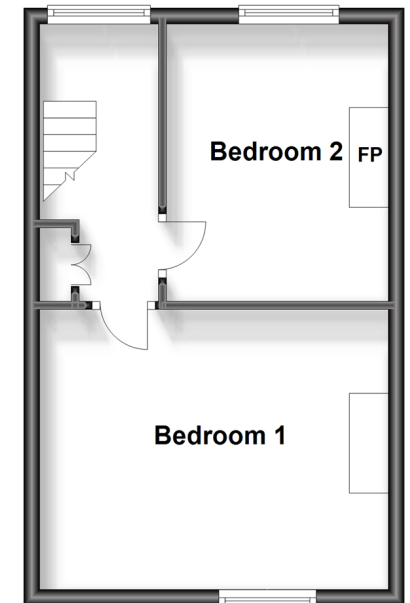
Ground Floor

Approx. 41.6 sq. metres (448.1 sq. feet)



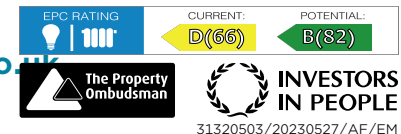
First Floor

Approx. 31.4 sq. metres (337.5 sq. feet)



Call Lewes Road Brighton - 01273 604377 ■ cubittandwest.co.uk

- Legal advice should be taken to verify fixtures/fittings, planning, alterations and/or lease details
- Appliances & services are untested, dimensions are approximate and floor plans are not to scale



31320503/20230527/AF/EM