



Price
£550,000

Freehold

3x  1x  1x 

**Highview Avenue North,
Patcham, BN1**

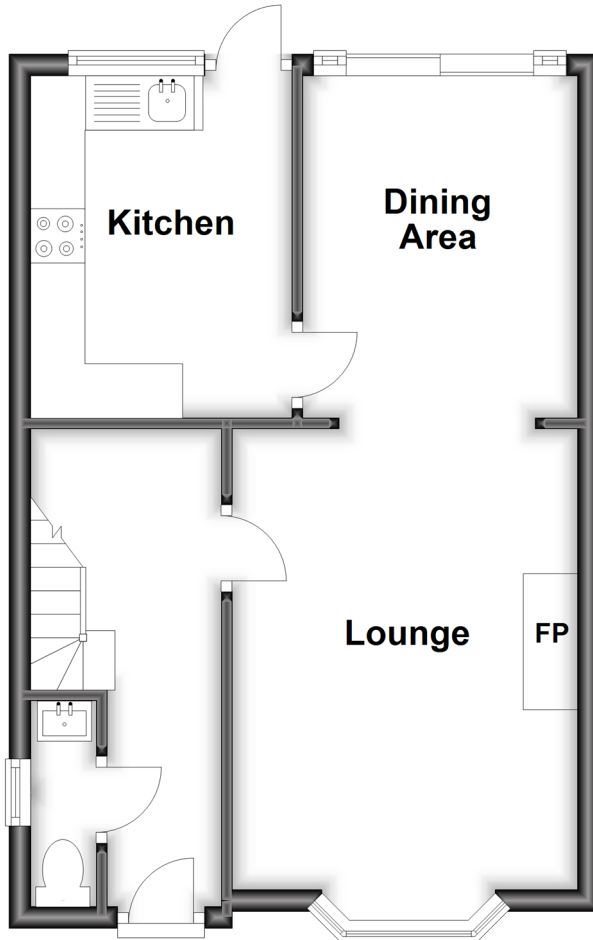
OVER 60?

Secure this property
for up to **59% less!**

cubitt&west
Helping you move forwards

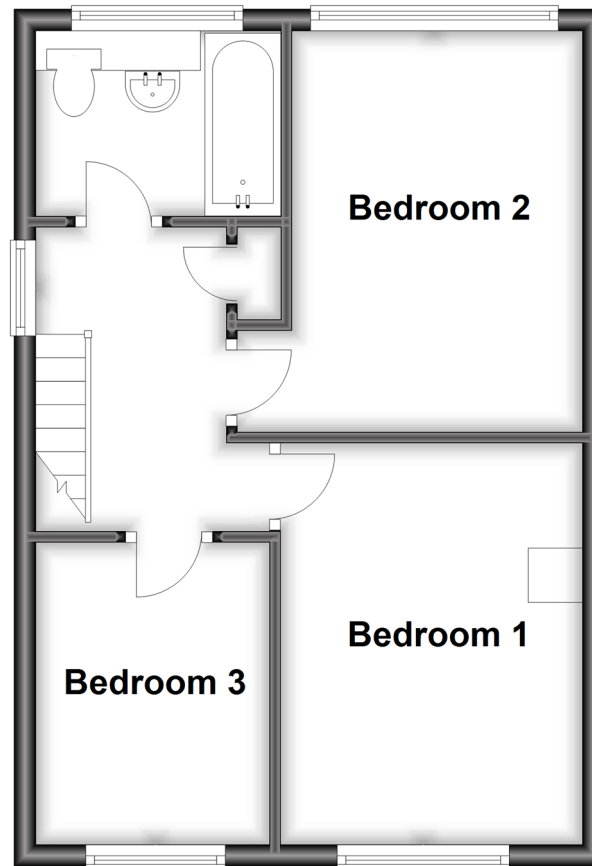
Ground Floor

Approx. 38.1 sq. metres (410.3 sq. feet)



First Floor

Approx. 37.7 sq. metres (405.7 sq. feet)



Accommodation

GROUND FLOOR

Entrance Hall

Lounge: 12'3 x 10'0 (3.74m x 3.05m)

Dining Area: 10'7 x 7'9 (3.23m x 2.36m)

Kitchen: 9'10 x 7'3 (3.00m x 2.21m)

Cloakroom

FIRST FLOOR

Landing

Bedroom 1: 11'7 x 8'4 (3.53m x 2.54m)

Bedroom 2 : 12'5 x 8'6 (3.79m x 2.59m)

Bedroom 3: 8'9 x 6'9 (2.67m x 2.06m)

Bathroom

OUTSIDE

Off Road Parking

Front & Rear Garden



Main features

- Large open plan lounge / dining area
- Handy downstairs cloakroom
- Pretty front and rear garden
- Outbuilding with power, ideal for bar / office space
- Quiet cul-de-sac in the heart of Patcham
- Close to all local amenities, shops, public transport and access to the A27 and A23



Nearest Schools

Primary Schools: Patcham Junior School 0.3 miles, Carden Primary 1.3 miles, Westdene Primary 1.4 miles

Secondary Schools: Patcham House Special School 0.3 miles, Patcham High School 0.3 miles, Dorothy Stringer



Transport Information

Train Stations: Preston Park 1.7 miles, Falmer 2.4 miles, Brighton 2.5 miles



Address

Highview Avenue North, Patcham, BN1



Directions

For directions to this property please contact us.



cubitt&west
Helping you move forwards

Call Patcham Branch 01273 541934 ■ cubittandwest.co.uk



■ Legal advice should be taken to verify fixtures/fittings, planning, alterations and/or lease details ■ Appliances & services are untested, dimensions are approximate and floor plans are not to scale
■ Through a Homewise Home For Life Plan people aged 60+ can secure this property for up to 59% less, by purchasing a Lifetime Lease.



31707380/20240124/TB1/ZC