



**Price**  
**£500,000**

**Freehold**

4x  2x  1x 

**Greenways Crescent,  
Shoreham-By-Sea, BN43**

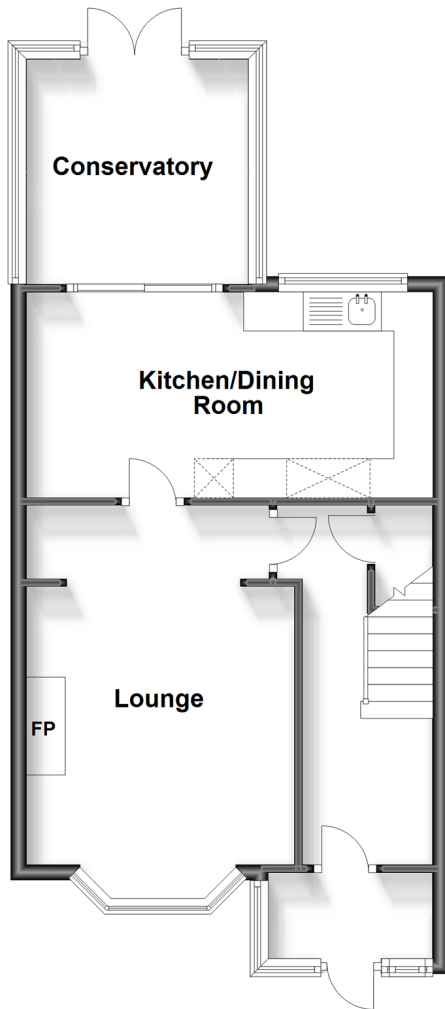
**OVER 60?**

Secure this property  
for up to **59% less!**

**cubitt&west**  
Helping you move forwards

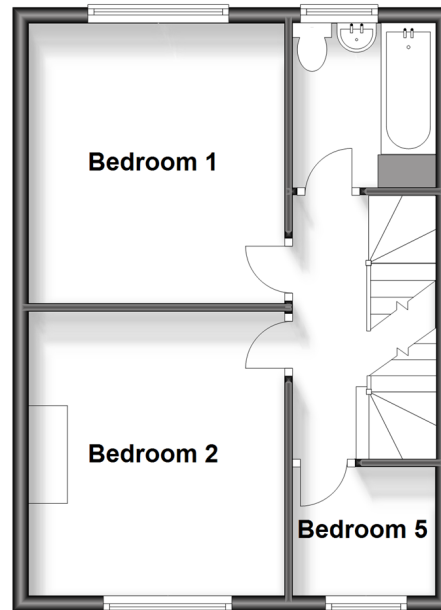
## Ground Floor

Approx. 49.4 sq. metres (531.9 sq. feet)



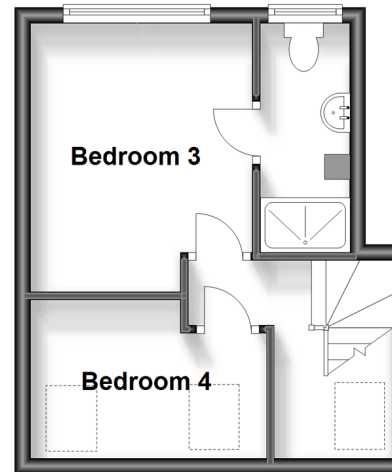
## First Floor

Approx. 38.3 sq. metres (412.5 sq. feet)



## Second Floor

Approx. 24.1 sq. metres (259.9 sq. feet)



## Accommodation

### GROUND FLOOR

Porch

Entrance Hall

Lounge: 15'4 x 11'5 (4.68m x 3.48m)

Kitchen / Dining Room: 15'11 x 8'8 (4.85m x 2.64m)

Conservatory: 9'7 x 9'6 (2.92m x 2.90m)

### FIRST FLOOR

Landing

Bedroom 1: 12'7 x 11'2 (3.84m x 3.41m)

Bedroom 2: 12'5 x 10'11 (3.79m x 3.33m)

Bedroom 5: 6'3 x 6'0 (1.91m x 1.83m)

Family Bathroom

### SECOND FLOOR

Landing

Bedroom 3: 12'6 x 9'4 (3.81m x 2.85m)

En Suite Shower Room

Bedroom 4: 9'11 x 6'10 (3.02m x 2.08m)

### OUTSIDE

Front & Rear Garden

Off Road Parking





## Main features

- Open plan kitchen / diner to the rear of the home
- Conservatory leading to large, flat rear garden
- Handy driveway for 2 cars
- Separate lounge with cosy fireplace
- Large loft conversion with 2 bedrooms
- Fantastic location in a popular part of Shoreham with local amenities, great schools and access to the A27



### Nearest Schools

Primary Schools: St Nicolas & St Mary's CE(Aided) Primary 0.3 miles, St Peter's Catholic Primary, Shoreham-by-Sea 0.3 miles, Buckingham Park Primary 0.4 miles



### Transport Information

Train Stations: Shoreham-by-Sea 0.6 miles, Southwick 1.3 miles, Fishergate 1.8 miles



### Address

Greenways Crescent, Shoreham-By-Sea, BN43



### Directions

For directions to this property please contact us.





**cubitt&west**  
Helping you move forwards

Call Patcham Branch 01273 541934 ■ [cubittandwest.co.uk](https://cubittandwest.co.uk)



■ Legal advice should be taken to verify fixtures/fittings, planning, alterations and/or lease details ■ Appliances & services are untested, dimensions are approximate and floor plans are not to scale  
■ Through a Homewise Home For Life Plan people aged 60+ can secure this property for up to 59% less, by purchasing a Lifetime Lease.



31707421/20230907/TB1/EBO