



**OVER 60?**

Secure this property  
for up to **59% less!**

**Price**

**£475,000**

**Freehold**

3x  1x  1x 

**Crown Road,  
Shoreham-By-Sea, BN43**

**cubitt&west**  
Helping you move forwards





## Main features

- Large, flat rear garden with patio area
- Extended bright kitchen & dining room
- Detached garage & workshop
- Potential for further development into the loft (stpp)
- Fantastic location close to local amenities, train station & A27

## Accommodation

### GROUND FLOOR

Entrance Hall

Lounge: 14'9 x 10'2 (4.50m x 3.10m)

Kitchen

Sun Room (Used As Dining Room): 20'8 x 17'4 (6.30m x 5.29m)

Bedroom 1: 13'5 x 10'2 (4.09m x 3.10m)

Bedroom 2: 9'4 x 8'0 (2.85m x 2.44m)

Bedroom 3: 8'3 x 7'6 (2.52m x 2.29m)

Bathroom

### OUTSIDE

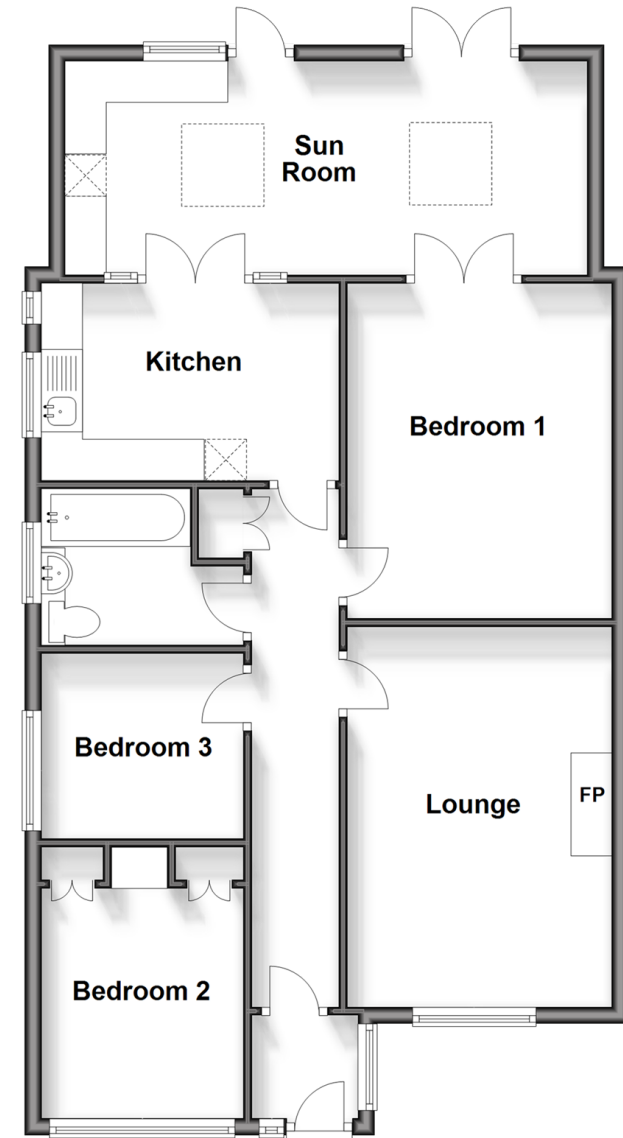
Garage & Off Road Parking

Workshop

Front & Rear Garden

## Ground Floor

Approx. 83.3 sq. metres (896.5 sq. feet)



**Call Patcham - 01273 541934 ■ [cubittandwest.co.uk](http://cubittandwest.co.uk)**

- Legal advice should be taken to verify fixtures/fittings, planning, alterations and/or lease details
- Appliances & services are untested, dimensions are approximate and floor plans are not to scale
- Through a Homewise Home For Life Plan people aged 60+ can secure this property for up to 59% less, by purchasing a Lifetime Lease.



31707587/20240412/ZC/EBO