



Price
£500,000

Freehold

2x  1x  1x 

**The Deneway,
Westdene, BN1**

OVER 60?

Secure this property
for up to **59% less!**

cubitt&west
Helping you move forwards



Main features

- Great size lounge / diner to the rear of the bungalow
- Pretty gardens surrounding the home
- Good size plot
- Room for improvement and potential for further development (stpp)
- Fantastic location close to local amenities and great commuter links

Accommodation

GROUND FLOOR

Hallway

Lounge / Diner: 20'2 x 13'10 at widest point (6.15m x 4.22m)

Kitchen: 10'9 x 7'6 (3.28m x 2.29m)

Bedroom 1: 13'8 up to bay x 12'3 (4.17m x 3.74m)

Bedroom 2: 8'7 x 7'1 (2.62m x 2.16m)

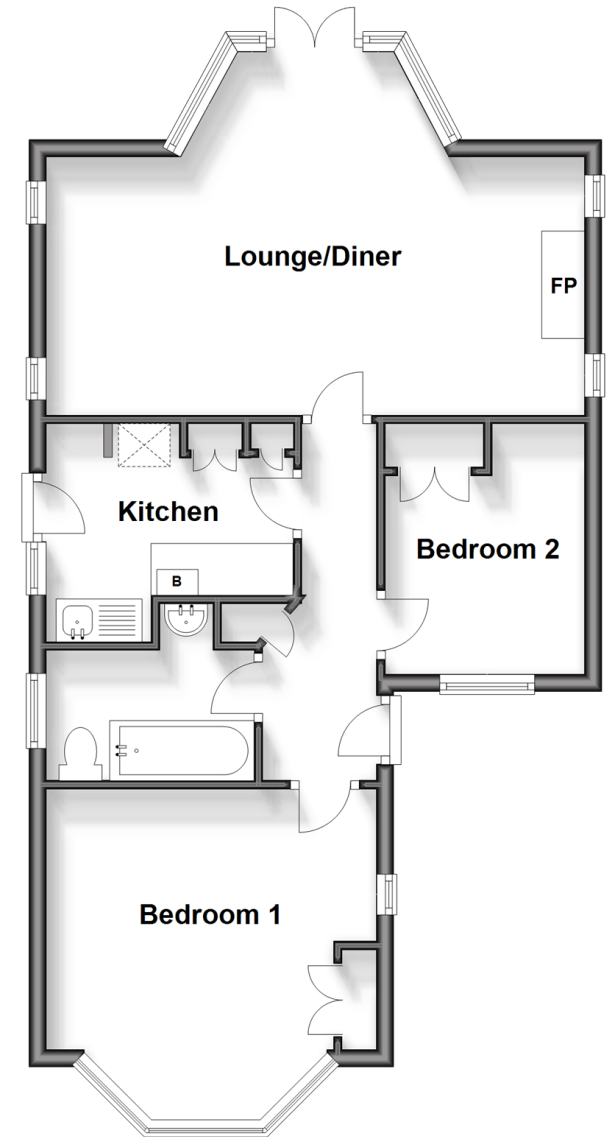
Bathroom

OUTSIDE

Front & Rear Garden

Ground Floor

Approx. 58.1 sq. metres (625.6 sq. feet)



Call Patcham - 01273 541934 ■ cubittandwest.co.uk

- Legal advice should be taken to verify fixtures/fittings, planning, alterations and/or lease details
- Appliances & services are untested, dimensions are approximate and floor plans are not to scale
- Through a Homewise Home For Life Plan people aged 60+ can secure this property for up to 59% less, by purchasing a Lifetime Lease.



31707591/20240229/TB1/EBO