

**OVER 60?**

Secure this property  
for up to **59% less!**



**Price**

**£190,000**

**Leasehold**

1x  1x  1x 

**Weavers Court, Ropetackle,  
Shoreham-By-Sea, BN43**

**cubitt&west**  
Helping you move forwards





## Main features

- Popular Ropetackle development
- Generous top floor flat with large lounge & separate kitchen featuring a large Velux window
- Handy allocated parking bay
- Vendor already suited
- Fantastic location in the heart of Shoreham with great commuter links and direct access to the A27

## Accommodation

### SECOND FLOOR

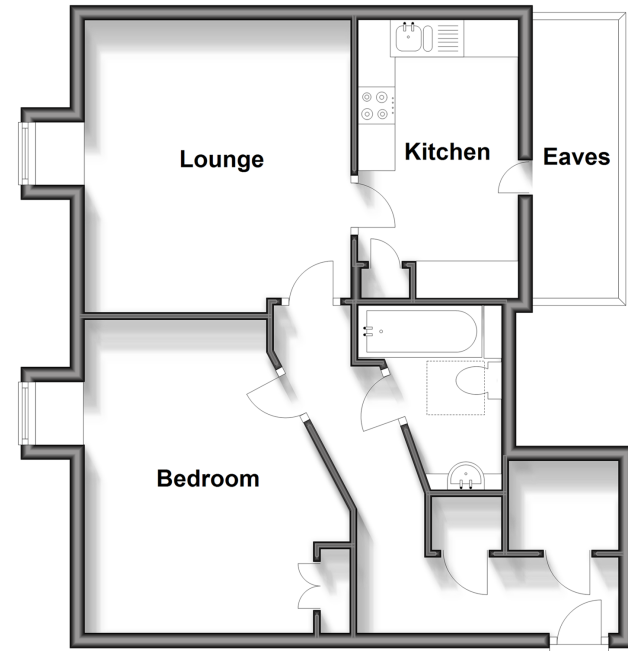
Entrance Hall  
 Lounge: 13'11 x 13'6 maximum (4.24m x 4.12m)  
 Kitchen: 12'8 x 6'11 (3.86m x 2.11m)  
 Bedroom: 14'6 x 13'8 (4.42m x 4.17m)  
 Bathroom

### OUTSIDE

Allocated Parking

### Second Floor

Approx. 52.5 sq. metres (565.5 sq. feet)



**Call Patcham - 01273 541934 ■ cubittandwest.co.uk**

■ Legal advice should be taken to verify fixtures/fittings, planning, alterations and/or lease details  
 ■ Through a Homewise Home For Life Plan people aged 60+ can secure this property for up to 59% less, by purchasing a Lifetime Lease.

■ Appliances & services are untested, dimensions are approximate and floor plans are not to scale



31707624/20240320/EBO/EBO