



OVER 60?

Secure this property
for up to **59% less!**

Price

£240,000

Leasehold

2x  1x  1x 

**Skylark Avenue,
Peacehaven, BN10**

cubitt&west
Helping you move forwards



Main features

- 2-bedroom first floor flat
- Situated in a lovely new build development
- Open plan lounge / kitchen, perfect for entertaining
- 2 x parking spaces
- Close to bus routes, picturesque walks and local amenities

Accommodation

FIRST FLOOR

Hallway

Lounge: 13'8 x 11'7 (4.17m x 3.53m)

Kitchen: 11'7 x 6'7 (3.53m x 2.01m)

Bedroom 1: 10'1 x 6'8 (3.08m x 2.03m)

Bedroom 2: 10'1 x 9'9 (3.08m x 2.97m)

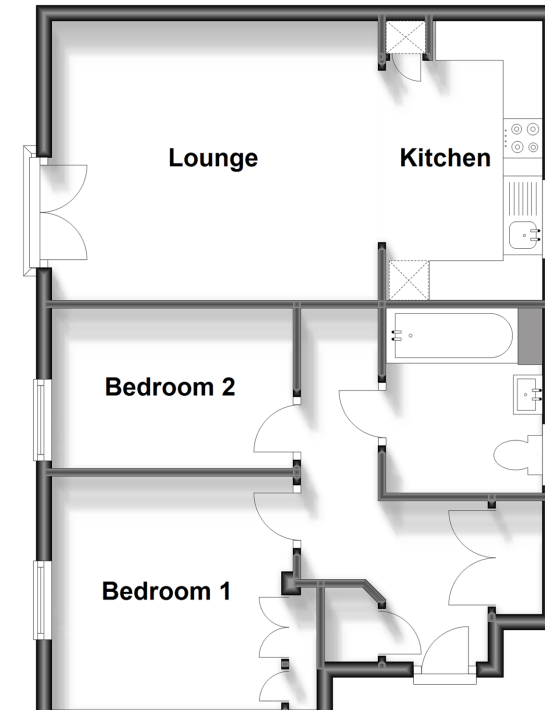
Bathroom

OUTSIDE

Allocated parking x 2

First Floor

Approx. 52.5 sq. metres (565.4 sq. feet)



Call Peacehaven - 01273 584511 ■ cubittandwest.co.uk

■ Legal advice should be taken to verify fixtures/fittings, planning, alterations and/or lease details
 ■ Through a Homewise Home For Life Plan people aged 60+ can secure this property for up to 59% less, by purchasing a Lifetime Lease.

■ Appliances & services are untested, dimensions are approximate and floor plans are not to scale



31810708/20231007/EF/SC