



Price
£175,000

Leasehold

2x  1x  1x 

**Top Floor Apartment,
Meeching Road,
Newhaven, East Sussex,
BN9**

OVER 60?

Secure this property
for up to **59% less!**

cubitt&west
Helping you move forwards



Main features

- Located on the first floor and ideal for first time buyers
- Open plan kitchen and living area
- Close to the town centre, bus routes and local train station
- Low maintenance charges
- Utility room

Accommodation

FIRST FLOOR

Bedroom 1 : 14'9 x 9'2 (4.50m x 2.80m)

Bedroom 2: 10'8 x 10'0 (3.25m x 3.05m)

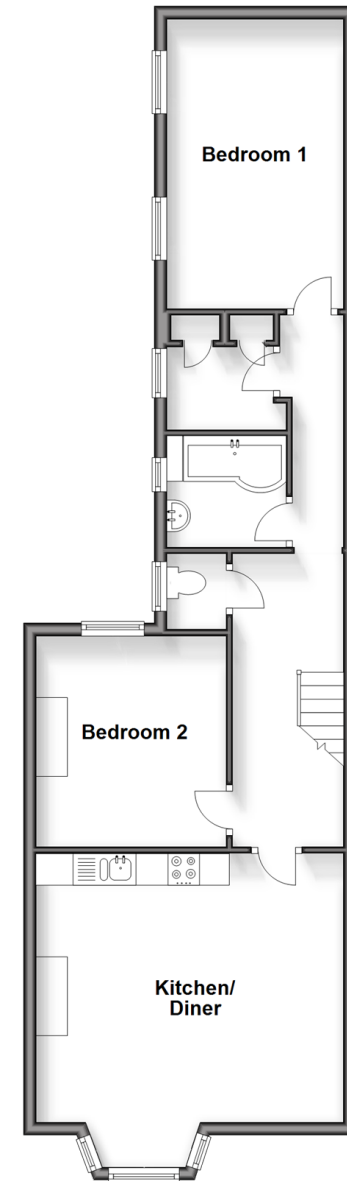
Cloakroom

Bathroom

Utility Room: 6'3 x 5'5 (1.91m x 1.65m)

Kitchen/Diner : 17'0 x 15'5 (5.19m x 4.70m)

Top Floor
Approx. 66.4 sq. metres (714.3 sq. feet)



Call Peacehaven - 01273 584511 ■ cubittandwest.co.uk

- Legal advice should be taken to verify fixtures/fittings, planning, alterations and/or lease details
- Appliances & services are untested, dimensions are approximate and floor plans are not to scale
- Through a Homewise Home For Life Plan people aged 60+ can secure this property for up to 59% less, by purchasing a Lifetime Lease.



31810861/20240423/CY/DGK