



Price
£525,000

Freehold

3x  1x  2x 

**Northwood Avenue,
Saltdean, Brighton, BN2**

OVER 60?

You could get up to
59% off the price!*

cubitt&west
Helping you move forwards



Main features

- Extended and recently redecorated throughout
- Cosy log burner in the dining area
- Secluded gardens with stunning views over Telscombe Tye
- Private driveway with parking for several cars
- Hot tub & summer house
- Sought after location

Accommodation

GROUND FLOOR

Entrance Porch

Lounge Area: 19'6 x 12'9 (5.95m x 3.89m)

Dining Area: 13'1 x 9'7 (3.99m x 2.92m)

Kitchen: 16'11 x 6'9 (5.16m x 2.06m)

Inner Hallway

Bedroom 1: 16'0 at widest point x 9'10 (4.88m x 3.00m)

Bedroom 2: 13'1 at widest point x 8'5 (3.99m x 2.57m)

Bedroom 3: 9'9 at widest point x 7'9 (2.97m x 2.36m)

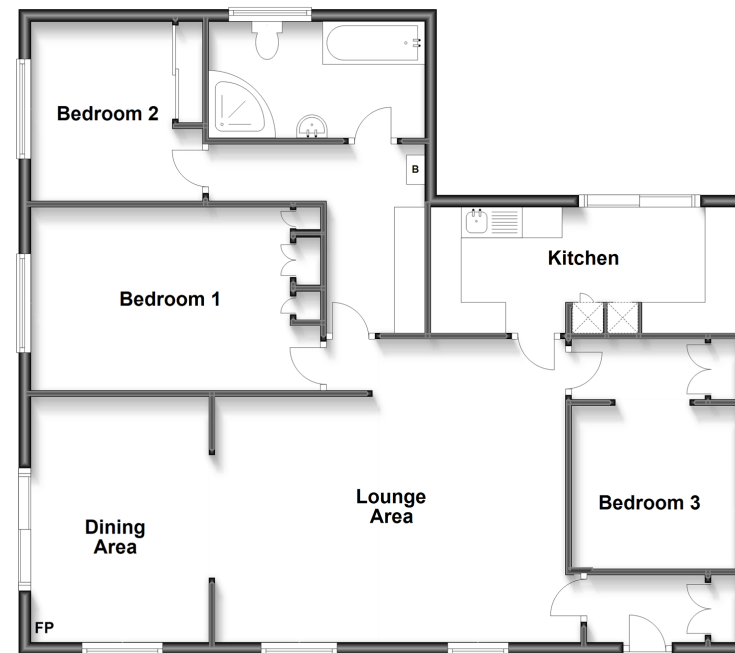
Bathroom

OUTSIDE

Off Road Parking

Front, Side & Rear Garden

Ground Floor
Approx. 102.5 sq. metres (1103.4 sq. feet)



Call Saltdean - 01273 304453 ■ cubittandwest.co.uk

■ Legal advice should be taken to verify fixtures/fittings, planning, alterations and/or lease details
 ■ Our Homewise partnership offer a 'Home for Life' plan to buyers over 60, granting a lifetime lease for your protection and reducing the purchase price by up to 59%

■ Appliances & services are untested, dimensions are approximate and floor plans are not to scale



32008004/20221024/TB/EBO