



Price
£445,000

Freehold

2x  1x  1x 

**Cissbury Crescent,
Saltdean, BN2**

OVER 60?

You could get up to
59% off the price!*

cubitt&west
Helping you move forwards



Main features

- An attractive home that is bright, airy and beautifully presented throughout
- Modern kitchen / breakfast room
- Generous lounge with dining room
- Garage and off street parking
- Sought after area in Saltdean

Accommodation

GROUND FLOOR

Entrance Hall

Lounge: 15'0 x 10'10 (4.58m x 3.30m)

Dining Area: 11'8 x 7'3 (3.56m x 2.21m)

Kitchen: 15'2 x 9'11 (4.63m x 3.02m)

Study: 10'3 x 7'8 (3.13m x 2.34m)

Bedroom 1: 13'5 x 11'7 at widest point (4.09m x 3.53m)

Bedroom 2: 9'2 x 7'5 at widest point (2.80m x 2.26m)

Shower Room

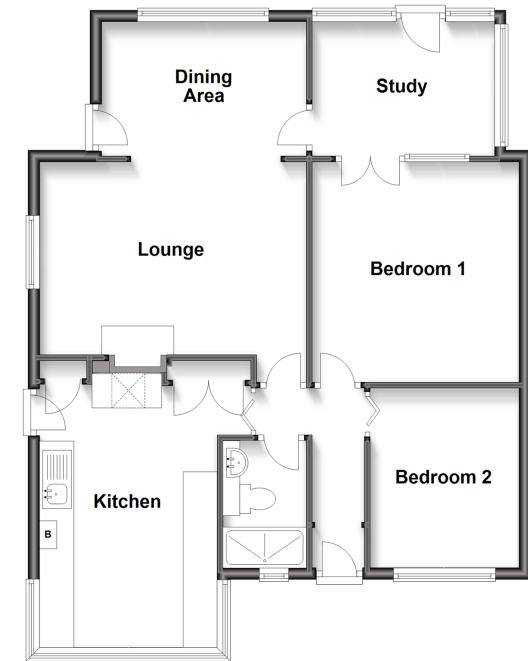
OUTSIDE

Garage & Off Road Parking

Rear Garden

Summer House: 13'5 x 5'6 (4.09m x 1.68m)

Split Level Ground Floor
Approx. 78.5 sq. metres (845.0 sq. feet)



Call Saltdean - 01273 304453 ■ cubittandwest.co.uk

- Legal advice should be taken to verify fixtures/fittings, planning, alterations and/or lease details
- Our Homewise partnership offer a 'Home for Life' plan to buyers over 60, granting a lifetime lease for your protection and reducing the purchase price by up to 59%

■ Appliances & services are untested, dimensions are approximate and floor plans are not to scale



32008822/20221018/TB/KK