



Guide Price
£350,000

Leasehold

3x  1x  1x 

**Embassy Court, Kings
Road, Brighton, East
Sussex, BN1**

cubitt&west
Helping you move forwards



Main features

- End of chain
- Ground floor flat in iconic Embassy Court
- Good condition
- Seafront location with views, close to bars & restaurants
- Perfect buy to let opportunity
- Sunny communal roof terrace on top floor

Accommodation

GROUND FLOOR

Entrance Hall

Lounge : 15'0 x 12'0 (4.58m x 3.66m)

Kitchen : 8'0 x 8'0 (2.44m x 2.44m)

Bedroom 1 : 12'10 x 11'10 (3.91m x 3.61m)

Bedroom 2 : 12'10 x 7'11 (3.91m x 2.41m)

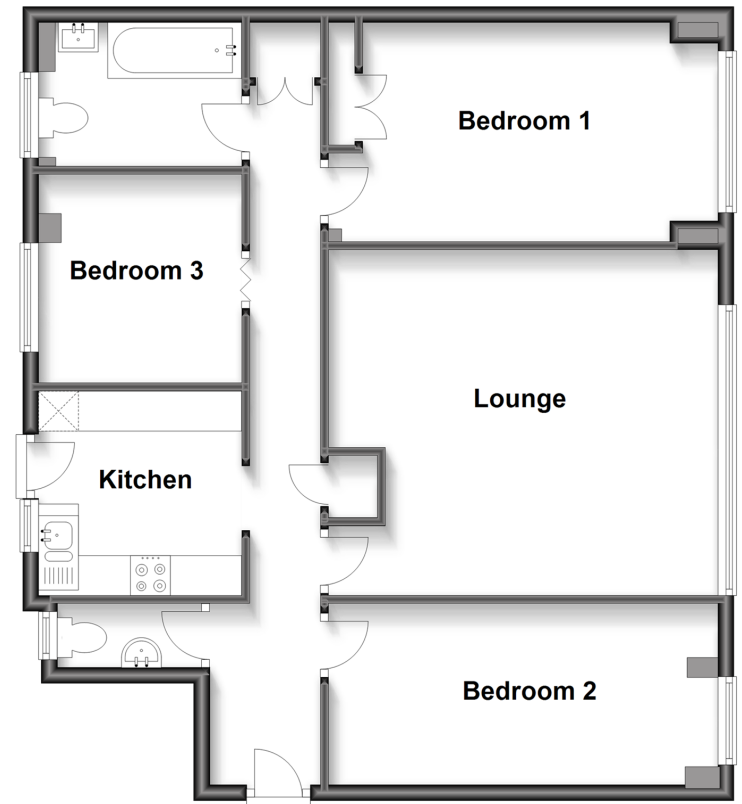
Bedroom 3 : 8'1 x 8'0 (2.47m x 2.44m)

Bathroom

Cloakroom

Ground Floor

Approx. 77.5 sq. metres (834.0 sq. feet)



Call Central Brighton - 01273 820600 ■ cubittandwest.co.uk

- Legal advice should be taken to verify fixtures/fittings, planning, alterations and/or lease details
- Appliances & services are untested, dimensions are approximate and floor plans are not to scale



32412316/20230629/AB/AB