



**Guide Price**  
**£350,000**

**Leasehold**

1x  1x  1x 

**Bedford Towers, Kings  
Road, Brighton, East  
Sussex, BN1**

**cubitt&west**  
Helping you move forwards





## Main features

- 6th floor (with passenger lift) apartment on Brighton seafront
- 743 square ft
- Seaviews
- Enclosed balcony
- Additional storage room, ideal bike storage
- No onward chain

## Accommodation

### SIXTH FLOOR

Entrance Hall

Lounge/Dining Room : 21'2 x 15'3 (6.46m x 4.65m)

Sun Room : 18'9 x 5'11 (5.72m x 1.80m)

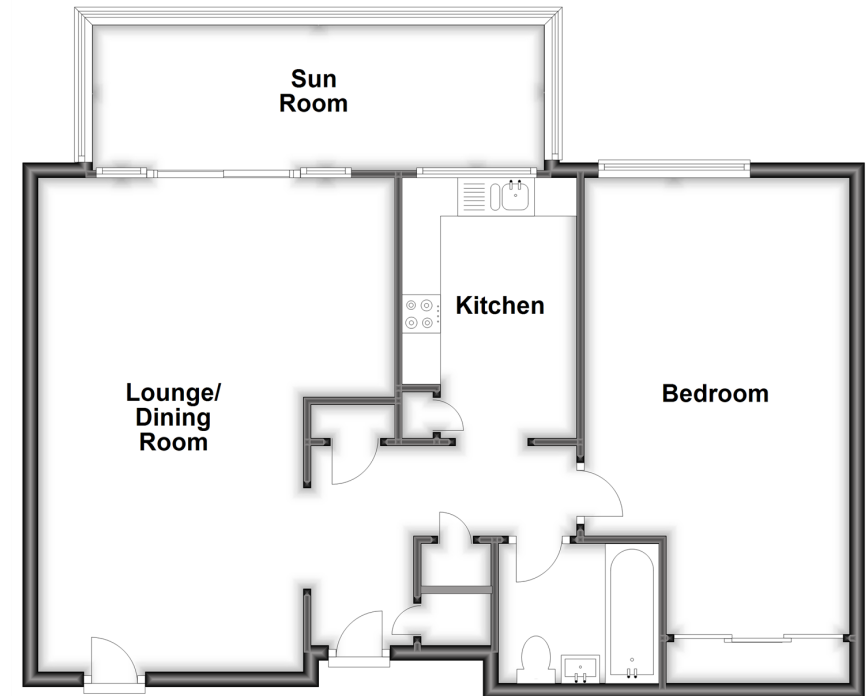
Kitchen : 12'11 x 7'5 (3.94m x 2.26m)

Bedroom : 19'2 x 11'4 (5.85m x 3.46m)

Bathroom

### Sixth Floor

Approx. 79.9 sq. metres (860.2 sq. feet)



**Call Central Brighton - 01273 820600 ■ [cubittandwest.co.uk](http://cubittandwest.co.uk)**

■ Legal advice should be taken to verify fixtures/fittings, planning, alterations and/or lease details

■ Appliances & services are untested, dimensions are approximate and floor plans are not to scale



32412571/20230103/EM/EM