



Price
£240,000

Leasehold

1x  1x  1x 

**Ardingly Court, High
Street, Brighton, East
Sussex, BN2**

cubitt&west
Helping you move forwards



Main features

- Close to Kemp Town high street and Brighton seafront/beach
- Good sized living space and kitchen ideal for entertaining
- Light and bright with plenty of storage space
- Perfect for a first-time buyer or investor
- Offered chain free with good lease

Accommodation

FIRST FLOOR

Entrance Hall

Lounge : 15'0 x 10'9 (4.58m x 3.28m)

Kitchen : 11'4 x 9'0 (3.46m x 2.75m)

Bedroom : 10'10 x 10'4 (3.30m x 3.15m)

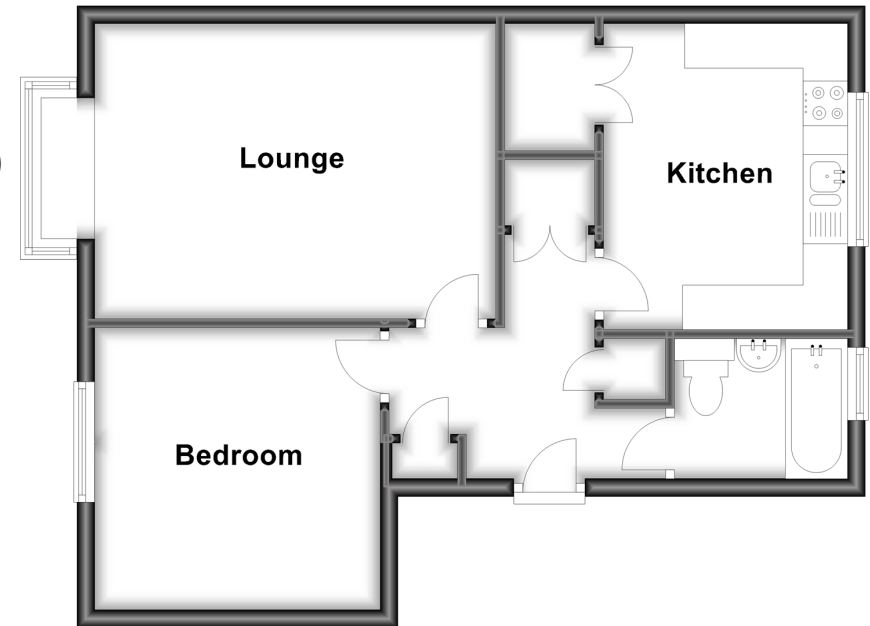
Bathroom

OUTSIDE

Communal Garden

First Floor

Approx. 48.5 sq. metres (521.7 sq. feet)



Call Central Brighton - 01273 820600 ■ cubittandwest.co.uk

- Legal advice should be taken to verify fixtures/fittings, planning, alterations and/or lease details
- Appliances & services are untested, dimensions are approximate and floor plans are not to scale



32412641/20230911/AF/AB