



**Price**  
**£425,000**

**Leasehold**

1x  1x  1x 

**Gwydyr Mansions,  
Holland Road, Hove,  
East Sussex, BN3**

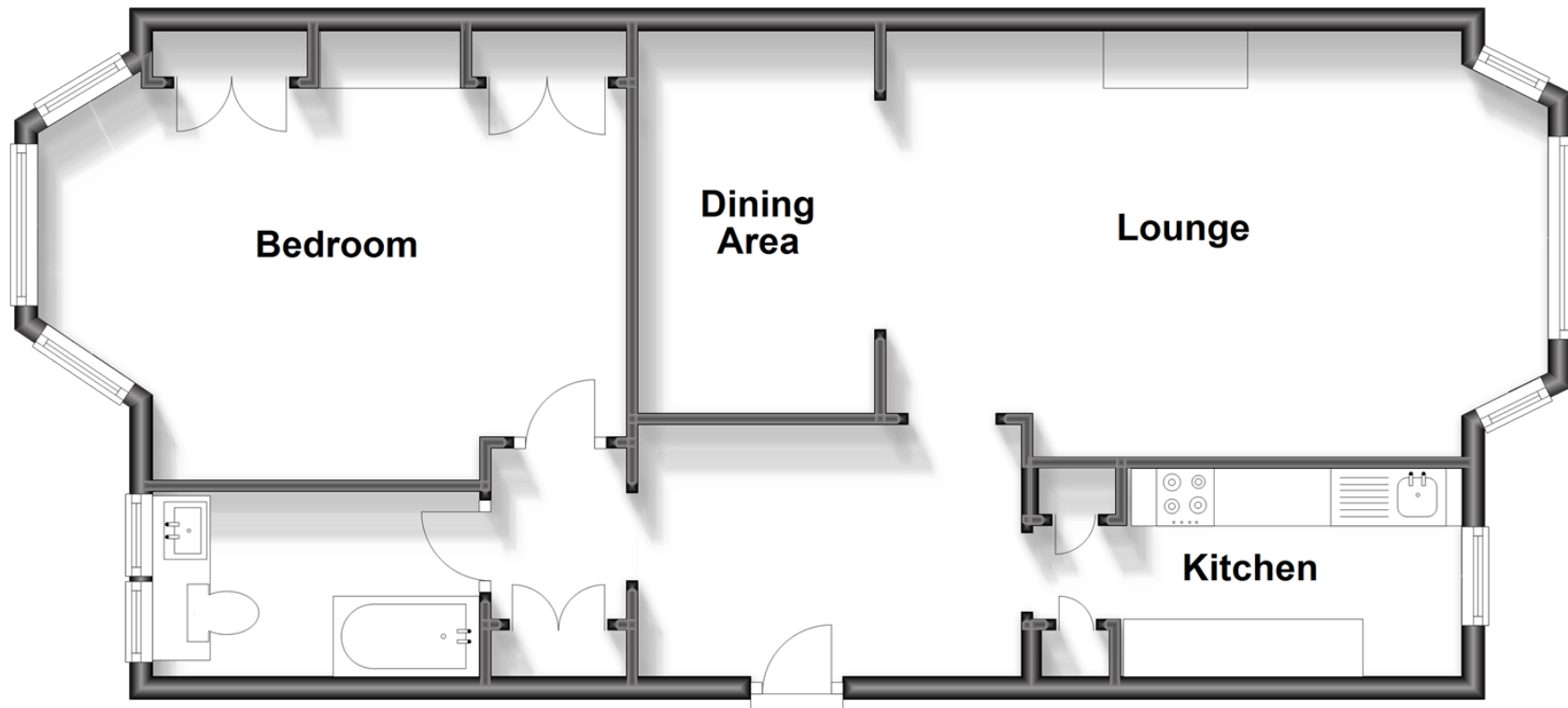


Virtual Reality Tour available

**cubitt&west**  
Helping you move forwards

## First Floor

Approx. 68.0 sq. metres (732.4 sq. feet)



### Accommodation

#### FIRST FLOOR

Entrance Hall

Lounge : 18'8 x 12'2 (5.69m x 3.71m)

Dining Area : 11'10 x 6'9 (3.61m x 2.06m)

Kitchen: 13'1 x 6'0 (3.99m x 1.83m)

Bathroom

Bedroom : 15'6 x 11'9 (4.73m x 3.58m)





## Main features

- Stunning period apartment in iconic mansion block
- Spacious and beautifully presented throughout
- 2 balconies and floor to ceiling windows
- Excellent storage throughout
- Next to Palmeria gardens and a short walk to Hove seafront



### Nearest Schools

Primary Schools: Somerhill Junior School 0.3 miles, St Andrew's CofE (Aided) Primary 0.6 miles

Secondary Schools: Brighton and Hove High School 0.4 miles



### Transport Information

Train Stations: Hove 0.9 miles, Preston Park 1.3 miles, Brighton 1.6 miles



### Address

Gwydyr Mansions, Holland Road, Hove, East Sussex, BN3



### Directions

For directions to this property please contact us.





**cubitt&west**  
Helping you move forwards

Call Central Brighton Branch 01273 820600 ■ [cubittandwest.co.uk](https://cubittandwest.co.uk)



■ Legal advice should be taken to verify fixtures/fittings, planning, alterations and/or lease details ■ Appliances & services are untested, dimensions are approximate and floor plans are not to scale



32412686/20230812/AF/JR