

OVER 60?

You could get up to
59% off the price!*



Video Tour available

Price

£500,000

Freehold

3x  1x  2x 

Selhurst Road, Woodingdean, East Sussex,
BN2

cubitt&west
Helping you move forwards



Main features

- Well presented detached bungalow in sought after location
- Wonderful rear garden backing onto woodland
- Potential to extend subject to planning
- Spacious and bright living areas
- Off street parking & garage

Accommodation

GROUND FLOOR

Hallway

Lounge/Diner: 20'7 x 13'5 (6.28m x 4.09m)

Kitchen/Breakfast Room: 12'7 x 9'9 (3.84m x 2.97m)

Utility Room: 11'2 x 8'4 (3.41m x 2.54m)

Bedroom 1: 13'8 x 11'4 (4.17m x 3.46m)

En Suite WC

Bedroom 2: 12'9 x 10'2 (3.89m x 3.10m)

Bedroom 3: 10'4 x 7'7 (3.15m x 2.31m)

Bathroom

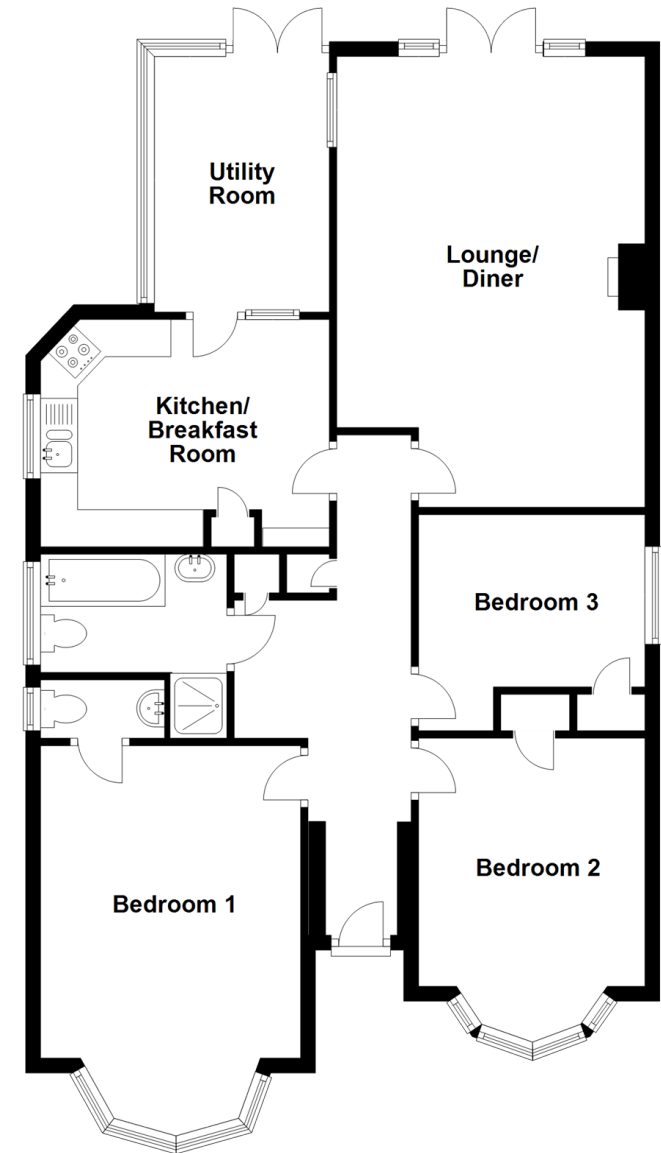
OUTSIDE

Front & Rear Gardens

Garage

Driveway

Ground Floor
Approx. 101.4 sq. metres (1091.9 sq. feet)



Call Woodingdean - 01273 606121 ■ cubittandwest.co.uk

- Legal advice should be taken to verify fixtures/fittings, planning, alterations and/or lease details
- Appliances & services are untested, dimensions are approximate and floor plans are not to scale
- Our Homewise partnership offer a 'Home for Life' plan to buyers over 60, granting a lifetime lease for your protection and reducing the purchase price by up to 59%



32507630/20220402/SH/SC