



Guide Price
£425,000

Freehold

3x  1x  2x 

**Chalkland Rise,
Woodingdean, Brighton,
East Sussex, BN2**

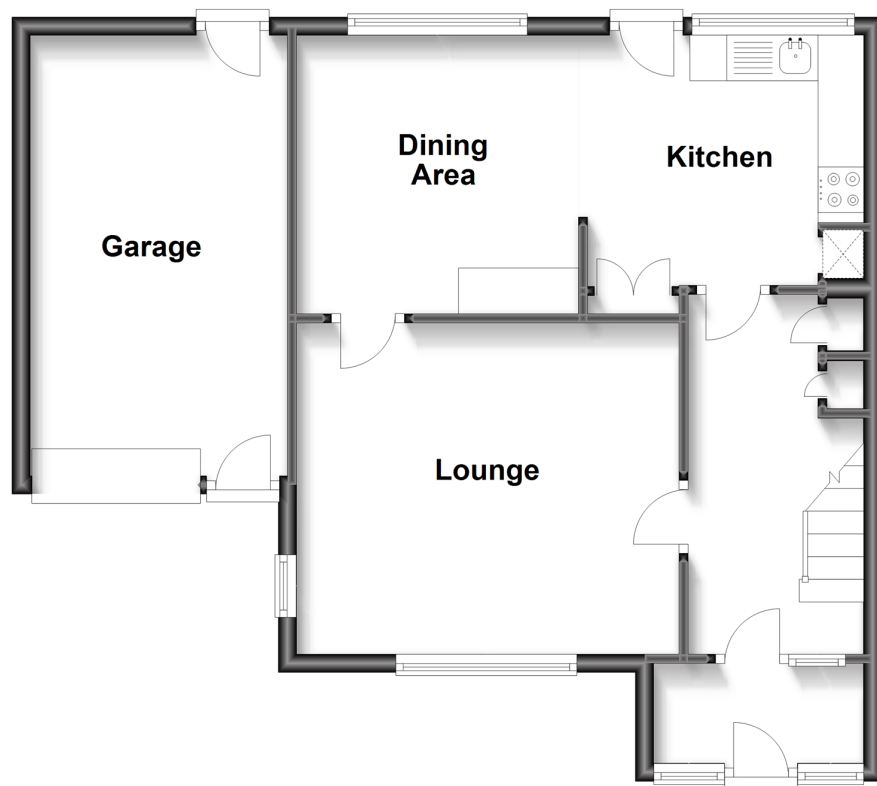
OVER 60?

Secure this property
for up to **59% less!**

cubitt&west
Helping you move forwards

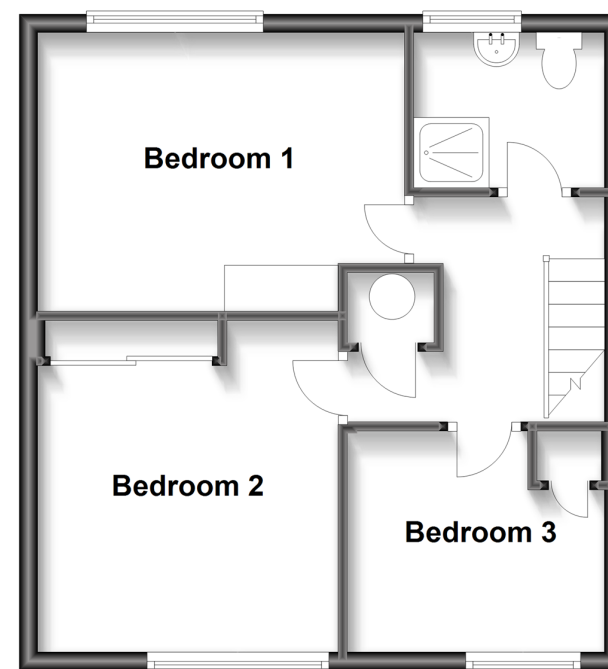
Ground Floor

Approx. 59.1 sq. metres (636.4 sq. feet)



First Floor

Approx. 42.2 sq. metres (454.7 sq. feet)



Accommodation

GROUND FLOOR

Entrance Porch

Entrance Hall

Lounge: 13'9 x 11'10 (4.19m x 3.61m)

kitchen: 9'10 x 8'10 (3.00m x 2.69m)

Dining Area: 10'2 x 9'10 (3.10m x 3.00m)

Garage: 17'0 x 10'11 (5.19m x 3.33m)

FIRST FLOOR

Landing

Bedroom 1: 13'1 x 9'10 (3.99m x 3.00m)

Bedroom 2: 11'10 x 10'6 (3.61m x 3.20m)

Bedroom 3: 9'2 x 7'10 (2.80m x 2.39m)

Shower Room

OUTSIDE

Front and Rear Garden

Driveway



Main features

- Well-presented family home
- Bright and spacious accommodation
- Open plan kitchen/dining room, perfect for entertaining
- Front and rear gardens
- Large garage with electric door
- Far reaching views to the downs and out to sea
- No onward chain



Nearest Schools

Primary Schools: Rudyard Kipling Primary 0.0 miles, Woodingdean Primary 0.9 miles, Coombe Road Primary 2.3 miles

Secondary Schools: Downs View Special School 0.9 miles,



Transport Information

Train Stations: Moulsecoomb 3.6 miles, Falmer 3.6 miles, London Road 4.0 miles, Brighton 4.0 miles



Address

Chalkland Rise, Woodingdean, Brighton, East Sussex, BN2



Directions

For directions to this property please contact us.



cubitt&west
Helping you move forwards

Call Woodingdean Branch 01273 606121 ■ cubittandwest.co.uk



- Legal advice should be taken to verify fixtures/fittings, planning, alterations and/or lease details
- Appliances & services are untested, dimensions are approximate and floor plans are not to scale
- Through a Homewise Home For Life Plan people aged 60+ can secure this property for up to 59% less, by purchasing a Lifetime Lease.



32507836/20240501/JON/JON