



OVER 60?

Secure this property
for up to **59% less!**

Price
£400,000

Freehold

3x  1x  1x 

**Stanstead Crescent,
Woodingdean, Brighton,
East Sussex, BN2**

cubitt&west
Helping you move forwards



Main features

- Well-presented family home
- Sunny aspect lounge with double doors opening to a sun trapped terrace with stunning views
- Open plan modern kitchen/dining area
- Modern shower room
- No onward chain

Accommodation

GROUND FLOOR

Porch

Entrance Hallway

Lounge: 18'0 x 10'5 (5.49m x 3.18m)

Dining Area: 13'4 x 9'10 (4.07m x 3.00m)

Kitchen: 14'0 x 8'2 at widest point (4.27m x 2.49m)

FIRST FLOOR

Landing

Bedroom 1: 12'4 x 10'4 (3.76m x 3.15m)

Bedroom 2: 10'5 x 9'0 (3.18m x 2.75m)

Bedroom 3: 8'10 x 7'6 (2.69m x 2.29m)

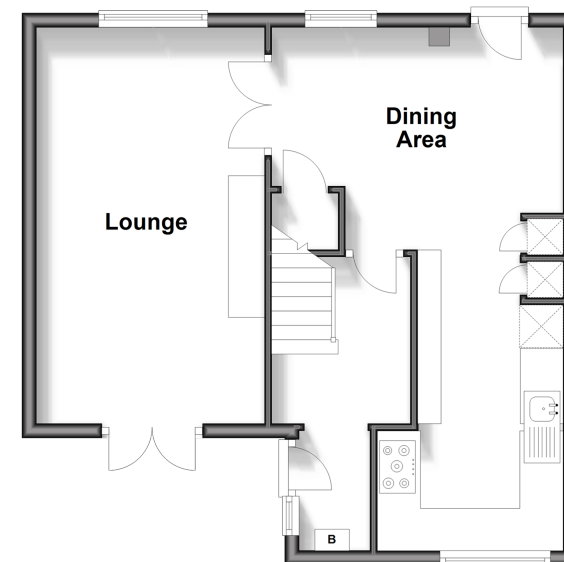
Shower Room

OUTSIDE

Front and Rear Garden

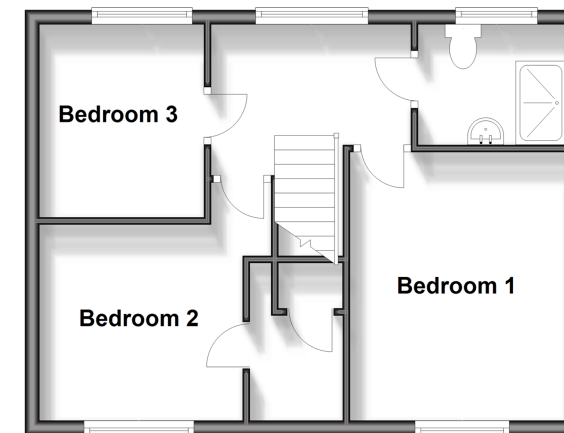
Ground Floor

Approx. 46.9 sq. metres (505.3 sq. feet)



First Floor

Approx. 40.4 sq. metres (435.4 sq. feet)



Call Woodingdean - 01273 606121 ■ cubittandwest.co.uk

- Legal advice should be taken to verify fixtures/fittings, planning, alterations and/or lease details
- Appliances & services are untested, dimensions are approximate and floor plans are not to scale
- Through a Homewise Home For Life Plan people aged 60+ can secure this property for up to 59% less, by purchasing a Lifetime Lease.



32507964/20240402/SH/JON