



OVER 60?

Secure this property
for up to **59% less!**

Price

£280,000

Leasehold

2x  1x  2x 

**Bowling Green Close,
Bognor Regis, West
Sussex, PO21**

cubitt&west
Helping you move forwards



Main features

- Prestigious Aldwick Bay Estate
- Set in a quiet cul-de-sac
- Close direct access to the foreshore
- No forward chain, ideal for a quick move
- Perfect holiday apartment or retirement haven

Accommodation

FIRST FLOOR

Hallway

Dining Area: 13'0 x 9'10 (3.97m x 3.00m)

Lounge: 19'2 x 12'3 at widest point (5.85m x 3.74m)

Balcony

Kitchen: 12'4 x 7'2 (3.76m x 2.19m)

Bedroom 1: 15'6 x 11'8 (4.73m x 3.56m)

Bedroom 2: 9'11 x 8'2 (3.02m x 2.49m)

Bathroom

Toilet

OUTSIDE

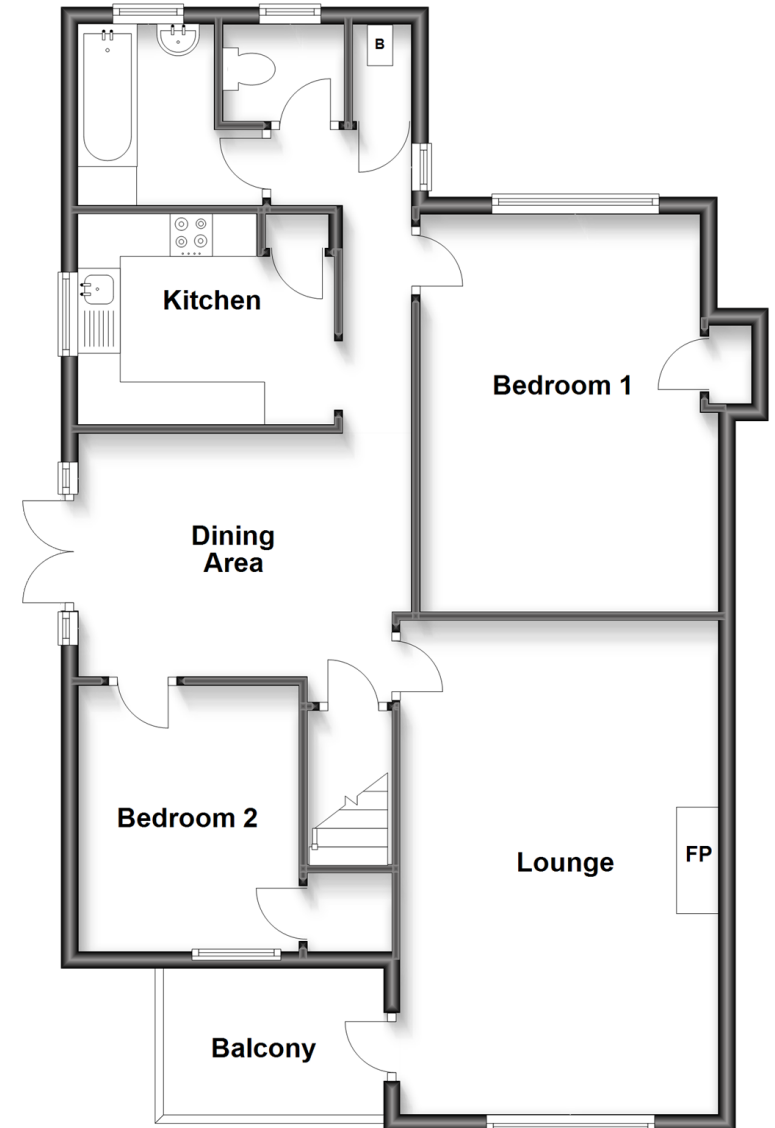
Garage

Allocated Parking

Communal Gardens

First Floor

Approx. 81.7 sq. metres (879.9 sq. feet)



Call Bognor - 01243 867632 ■ cubittandwest.co.uk

- Legal advice should be taken to verify fixtures/fittings, planning, alterations and/or lease details
- Appliances & services are untested, dimensions are approximate and floor plans are not to scale
- Through a Homewise Home For Life Plan people aged 60+ can secure this property for up to 59% less, by purchasing a Lifetime Lease.



40202156/20230320/GS1/SC