



Price

£250,000

Leasehold

2x  1x  1x 

**Villa Plage, Elmer Road,
Bognor Regis, West
Sussex PO22**

OVER 60?

Secure this property
for up to **59% less!**

cubitt&west
Helping you move forwards



Main features

- Far reaching sea views along the coast
- Modern kitchen
- Neutral decoration internally
- Balcony off of lounge with view of Elmer foreshore
- Ideal for retirement down to the South Coast

Accommodation

FIRST FLOOR

Hall

Lounge: 21'2 x 10'11 (6.46m x 3.33m)

Balcony

Kitchen: 7'6 x 7'2 (2.29m x 2.19m)

Bathroom

Bedroom 1: 11'4 into door well x 10'8 (3.46m x 3.25m)

Bedroom 2: 9'5 x 7'4 (2.87m x 2.24m)

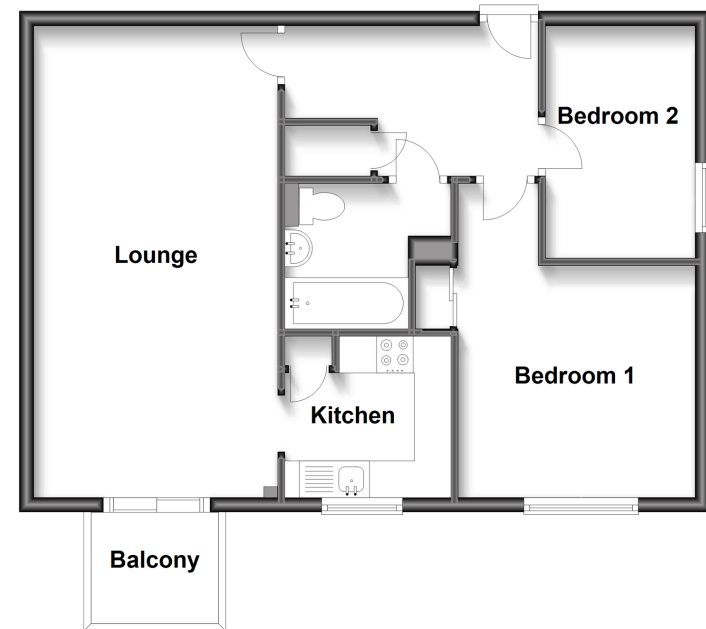
OUTSIDE

Resident Parking

Communal Gardens

First Floor

Approx. 58.0 sq. metres (624.0 sq. feet)



Call Bognor - 01243 867632 ■ cubittandwest.co.uk

■ Legal advice should be taken to verify fixtures/fittings, planning, alterations and/or lease details
 ■ Through a Homewise Home For Life Plan people aged 60+ can secure this property for up to 59% less, by purchasing a Lifetime Lease.

■ Appliances & services are untested, dimensions are approximate and floor plans are not to scale