



**Price**

**£290,000**

**Commonhold**

2x  1x  1x 

**The Gables, Norfolk  
Square, Bognor Regis,  
West Sussex, PO21**

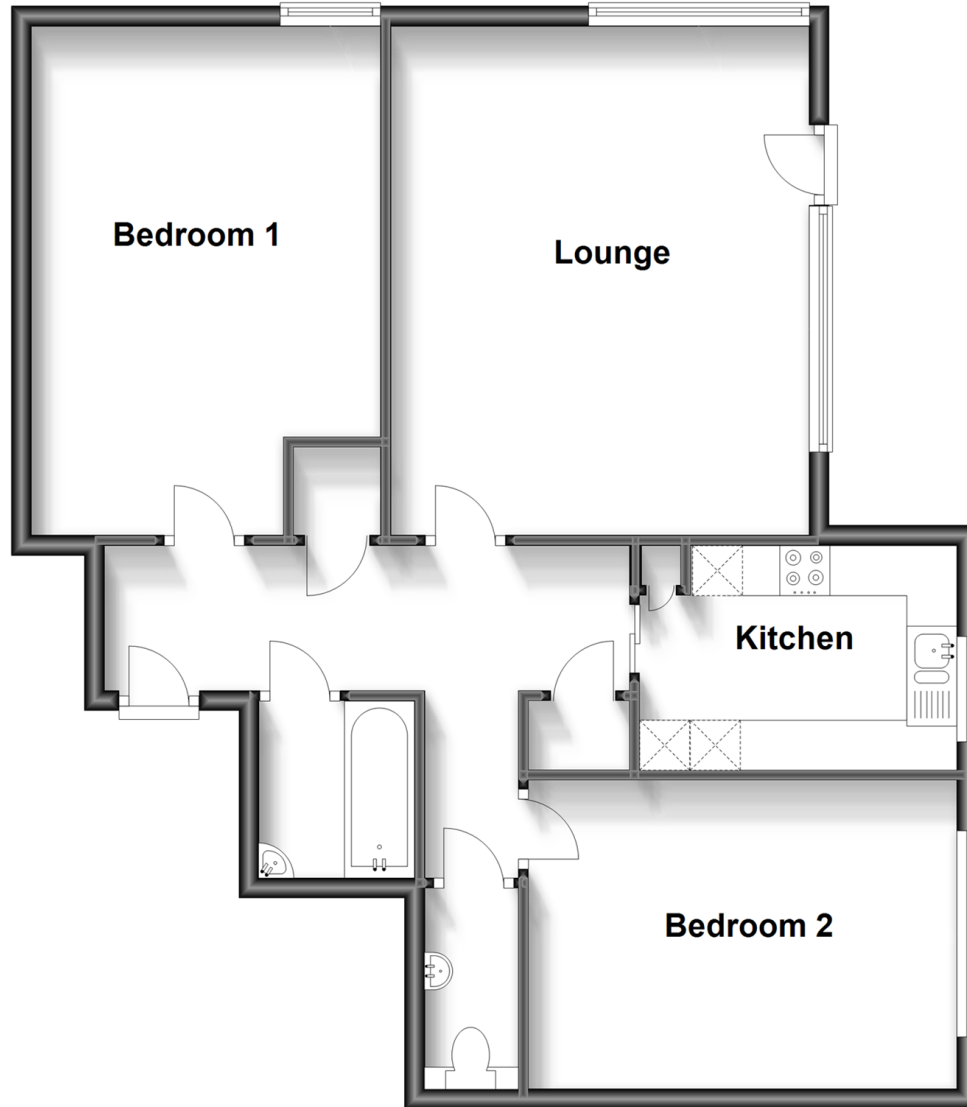
**OVER 60?**

Secure this property  
for up to **59% less!**

**cubitt&west**  
Helping you move forwards

## Ground Floor

Approx. 77.1 sq. metres (829.5 sq. feet)



## Accommodation

### GROUND FLOOR

Hallway

Lounge: 17'0 x 13'8 (5.19m x 4.17m)

Kitchen: 10'4 x 7'4 (3.15m x 2.24m)

Bedroom 1: 14'3 at widest point x 10'1 at widest point (4.35m x 3.08m)

Bedroom 2: 17'0 x 11'5 (5.19m x 3.48m)

Bathroom

Cloakroom

### OUTSIDE

Garage

Resident's Parking



## Main features

- No forward chain
- Beautiful sea front views
- Well appointed layout and room sizes
- Stunning larger than average sunny aspect garden
- Close to the seafront, local shops and transport links



### Nearest Schools

Primary Schools: St Mary's Catholic Primary 0.5 miles, Edward Bryant Primary 0.5 miles, Nyewood CofE Junior School 0.7 miles. Secondary Schools: The Regis 0.9 miles, Felpham Community College 1.3 miles, St Philip Howard Catholic High School 3.9 miles.



### Transport Information

Train Stations: Bognor Regis 0.4 miles, Barnham 3.9 miles, Chichester 5.6 miles



### Address

The Gables, Norfolk Square, Bognor Regis, West Sussex, PO21



### Directions

For directions to this property please contact us.



**cubitt&west**  
Helping you move forwards

Call Bognor Branch 01243 867632 ■ [cubittandwest.co.uk](https://www.cubittandwest.co.uk)



- Legal advice should be taken to verify fixtures/fittings, planning, alterations and/or lease details
- Appliances & services are untested, dimensions are approximate and floor plans are not to scale
- Through a Homewise Home For Life Plan people aged 60+ can secure this property for up to 59% less, by purchasing a Lifetime Lease.



40203697/20230811/GS1/SC