



Price

£90,000

Leasehold

1x  1x  1x 

**Homecroft House,
Sylvan Way, Bognor
Regis, West Sussex,
PO21**

cubitt&west
Helping you move forwards



Main features

- No onward chain
- Residents lounge which is the ideal meeting place for visitors and family
- Recently re-decorated in a neutral palette
- Close to the sea front and Aldwick parade of shops
- Excellent bus links giving access along the coast

Accommodation

GROUND FLOOR

Hall

Lounge: 14'8 x 10'6 (4.47m x 3.20m)

Kitchen: 7'5 x 5'5 (2.26m x 1.65m)

Bedroom: 11'2 up to fitted wardrobes x 8'8 (3.41m x 2.64m)

Shower Room

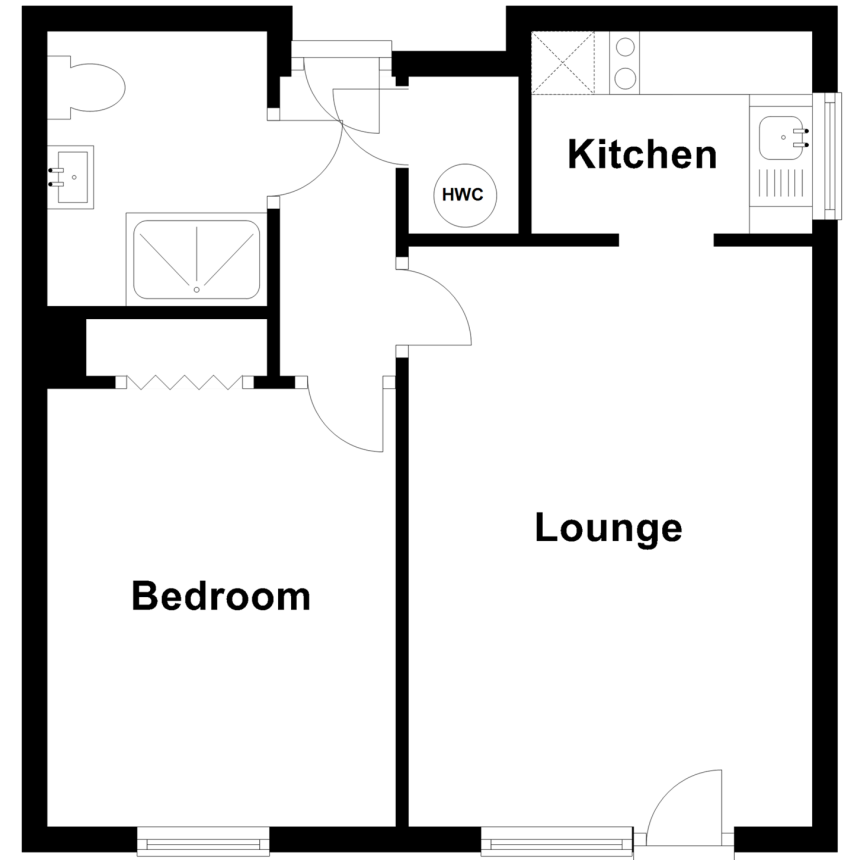
OUTSIDE

Communal Gardens

Resident Parking

Ground Floor

Approx. 37.6 sq. metres (404.3 sq. feet)



Call Bognor Regis - 01243 867632 ■ cubittandwest.co.uk

- Legal advice should be taken to verify fixtures/fittings, planning, alterations and/or lease details
- Appliances & services are untested, dimensions are approximate and floor plans are not to scale



40203848/20220907/GS1/SC