



**Price**  
**£170,000**

**Leasehold**

1x  1x  1x 

**The Steyne, Bognor  
Regis, West Sussex,  
PO21**

**OVER 60?**

Secure this property  
for up to **59% less!**



Video Tour available

**cubitt & west**  
Helping you move forwards



## Main features

- Balcony providing sea views
- Grade II Listed building in The Steyne conservation area
- This would make the perfect holiday home
- Re-fitted open and bright kitchen
- Close to transport links and local amenities

## Accommodation

### FIRST FLOOR

Lounge: 17'8 up to bay x 16'6 at widest point (5.39m x 5.03m)

Balcony

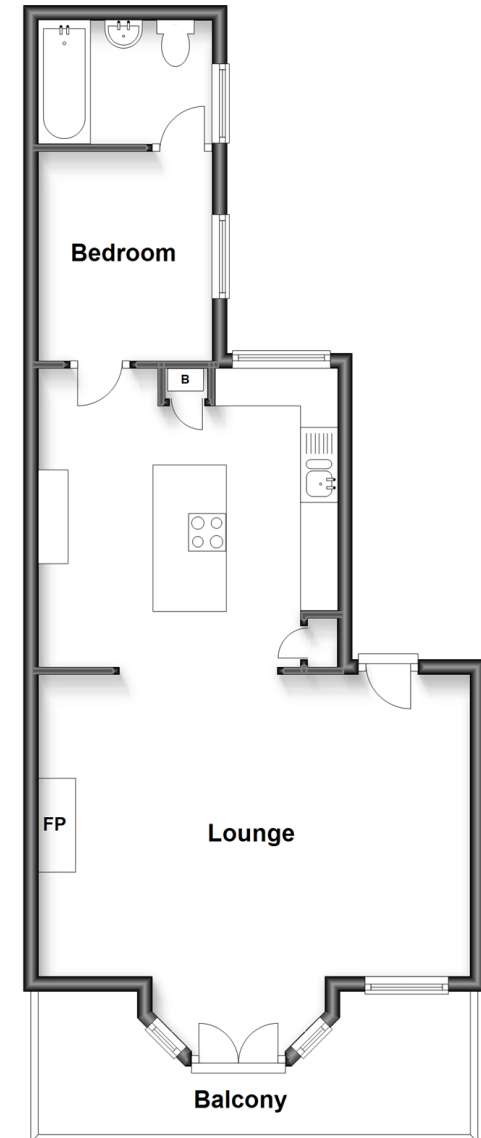
Kitchen: 13'5 x 11'7 (4.09m x 3.53m)

Bedroom: 9'2 x 7'6 (2.80m x 2.29m)

Bathroom

### First Floor

Approx. 52.6 sq. metres (565.8 sq. feet)



**Call Bognor Regis - 01243 867632 ■ [cubittandwest.co.uk](http://cubittandwest.co.uk)**

- Legal advice should be taken to verify fixtures/fittings, planning, alterations and/or lease details
- Appliances & services are untested, dimensions are approximate and floor plans are not to scale
- Through a Homewise Home For Life Plan people aged 60+ can secure this property for up to 59% less, by purchasing a Lifetime Lease.



40203889/20221003/GS1/SC