



Price

£399,995

Freehold

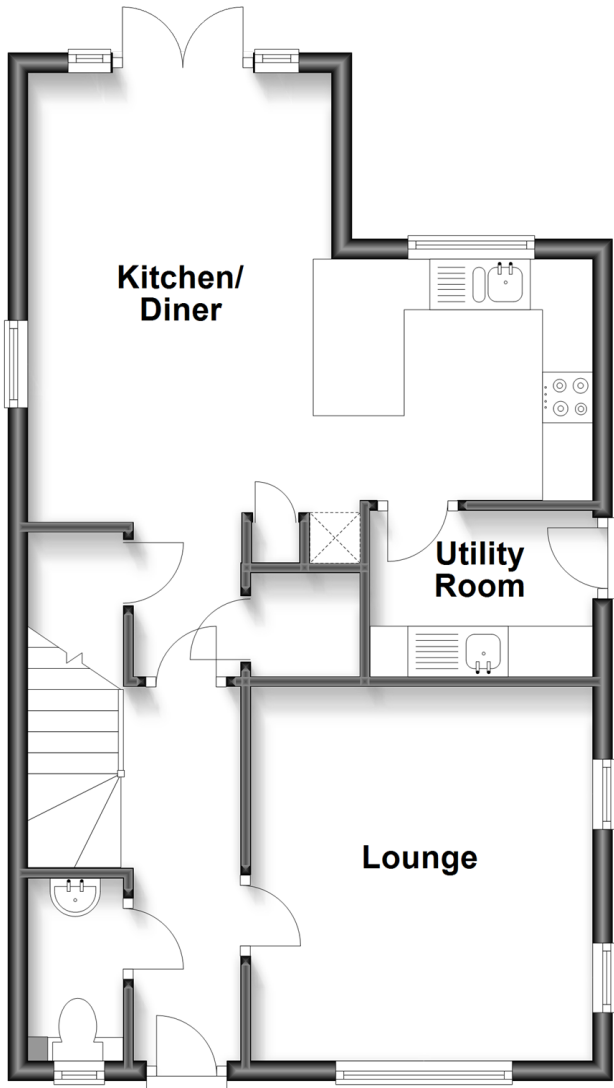
3x  2x  1x 

**'The Mason', New Barn
Lane, North Bersted,
Bognor Regis, West
Sussex, PO21**

cubitt&west
Helping you move forwards

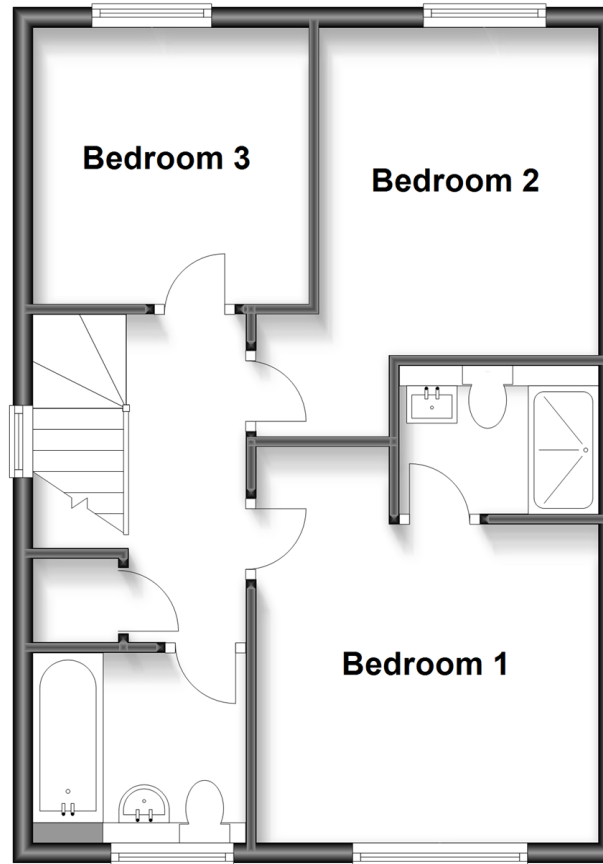
Ground Floor

Approx. 50.2 sq. metres (540.5 sq. feet)



First Floor

Approx. 45.4 sq. metres (488.7 sq. feet)



Accommodation

GROUND FLOOR

Hallway

Cloakroom: 6'3 x 3'2 (1.91m x 0.97m)

Lounge: 12'2 x 11'3 (3.71m x 3.43m)

Kitchen/Diner: 18'6 x 14'8 (5.64m x 4.47m)

Utility Room: 5'10 x 5'5 (1.78m x 1.65m)

FIRST FLOOR

Landing

Bedroom 1: 12'11 maximum x 11'3 (3.94m x 3.43m)

En-Suite Shower Room

Bedroom 2: 13'5 maximum x 11'3 maximum (4.09m x 3.43m)

Bedroom 3: 9'0 x 9'0 (2.75m x 2.75m)

Bathroom

OUTSIDE

Front Garden

2 Parking Spaces

Rear Garden



Main features

- Chain free and ready to move
- Electric vehicle charging points to all homes
- Forming part of a brand new development in North Bersted
- High quality finish detached house in a popular area
- Built by a 5 Star builder & 10-year NHBC warranty
- Dual-aspect living room and open plan kitchen/diner



Nearest Schools

Primary Schools: Bartons Primary School. 0.5 miles, Southway Primary 0.9 miles, Laburnum Grove Junior School, Bognor Regis 1.0 miles, South Bersted CofE Primary 1.3 miles Secondary Schools: The Regis 0.9 miles, Felpham Community College 2.6 miles.



Transport Information

Train Stations: Bognor Regis 2.0 miles, Chichester 5.4 miles, Barnham 5.9 miles



Address

'The Mason', New Barn Lane, North Bersted, Bognor Regis, West Sussex, PO21



Directions

For directions to this property please contact us.



cubitt&west
Helping you move forwards

Call Bognor Regis Branch 01243 867632 ■ cubittandwest.co.uk



- If buying to let, the energy rating will need to be improved to at least 'E' rating before you can let the property
- Appliances & services are untested, dimensions are approximate and floor plans are not to scale

- Legal advice should be taken to verify fixtures/fittings, planning, alterations and/or lease details

40203996/20230321/GS1/SC