



**Price**  
**£215,000**

**Leasehold**

2x  1x  1x 

**Princess House, High  
Street, Bognor Regis,  
West Sussex, PO21**

**OVER 60?**

Secure this property  
for up to **59% less!**



Video Tour available

**cubitt&west**  
Helping you move forwards





## Main features

- This flat has heaps of natural light
- Well appointed rooms
- Beautifully decorated by the current vendors
- Within close proximity to Hotham Park and the sea front
- Ideal for first time buyers and buy to let investors

## Accommodation

### FIRST FLOOR

#### Hallway

Lounge/Diner: 19'10 at widest point x 14'8 at widest point (6.05m x 4.47m)

#### Balcony

Kitchen: 13'10 x 7'10 (4.22m x 2.39m)

Bedroom 1: 13'9 at widest point x 9'10 (4.19m x 3.00m)

Bedroom 2: 13'9 x 7'10 (4.19m x 2.39m)

#### Shower Room

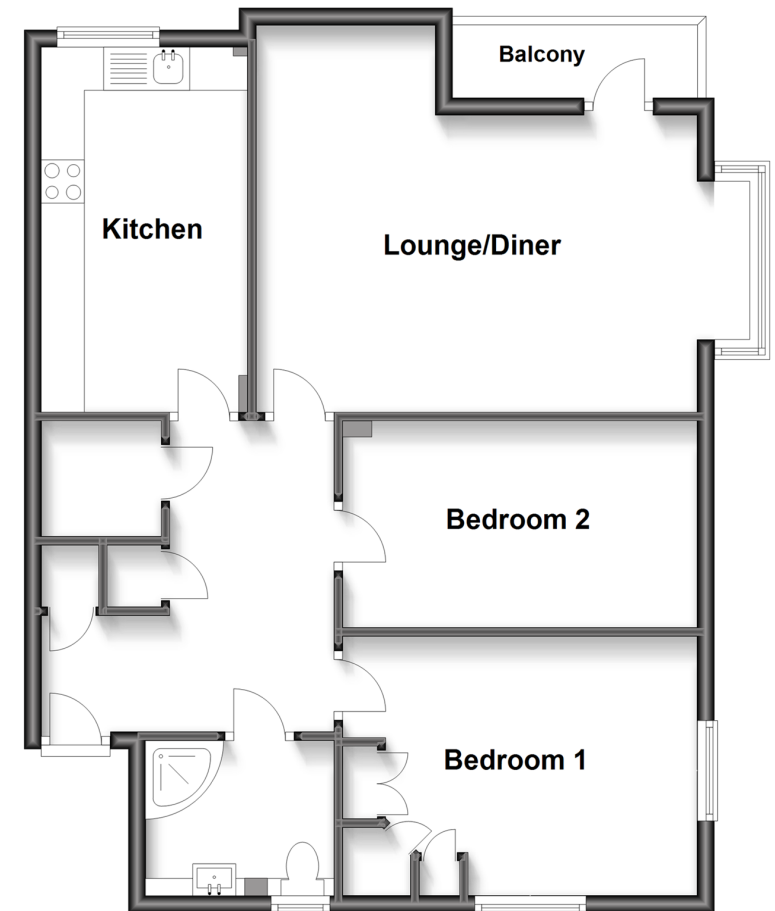
### OUTSIDE

#### Allocated Car Port

#### Communal Gardens

### First Floor

Approx. 71.2 sq. metres (766.7 sq. feet)



**Call Bognor Regis - 01243 867632 ■ [cubittandwest.co.uk](http://cubittandwest.co.uk)**

- Legal advice should be taken to verify fixtures/fittings, planning, alterations and/or lease details
- Appliances & services are untested, dimensions are approximate and floor plans are not to scale
- Through a Homewise Home For Life Plan people aged 60+ can secure this property for up to 59% less, by purchasing a Lifetime Lease.



40204029/20230323/GS1/SC