



OVER 60?

Secure this property
for up to **59% less!**

Price

£375,000

Freehold

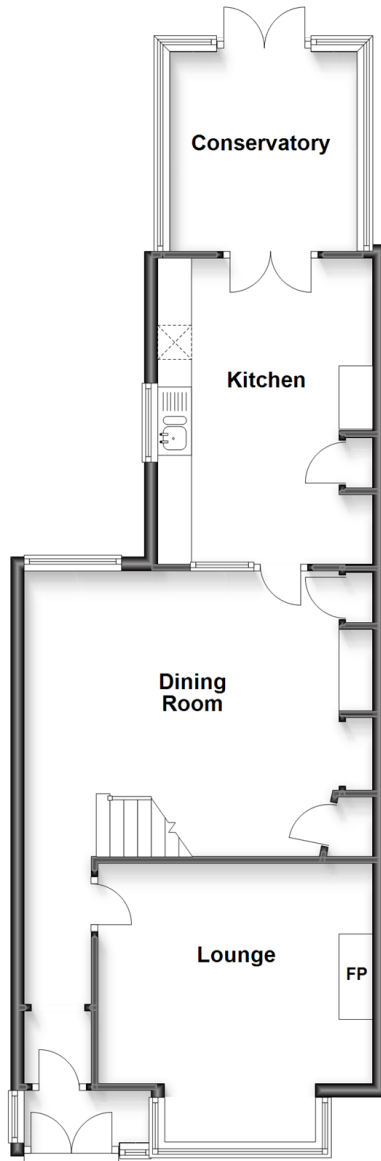
3x  1x  2x 

**Sea Road, Felpham,
Bognor Regis, West
Sussex, PO22**

cubitt&west
Helping you move forwards

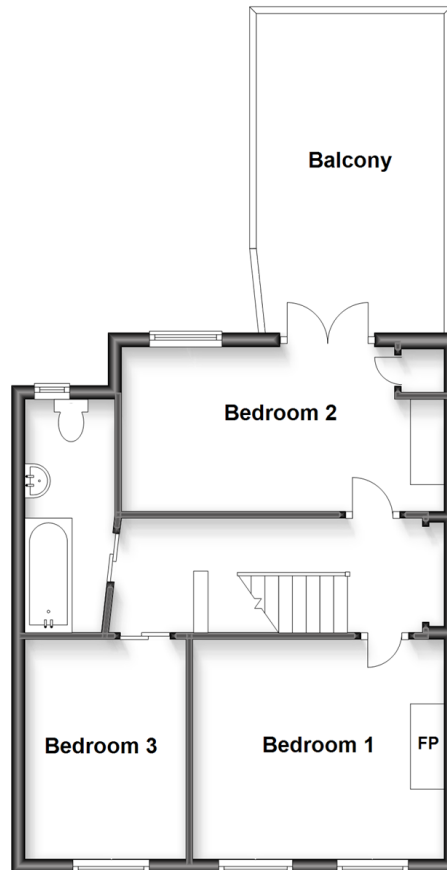
Ground Floor

Approx. 64.4 sq. metres (692.7 sq. feet)



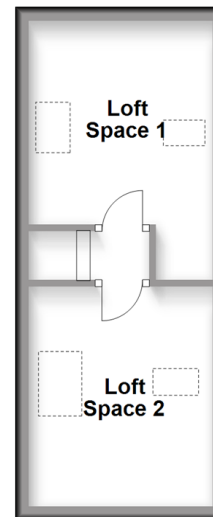
First Floor

Approx. 45.5 sq. metres (490.2 sq. feet)



Loft (ladder access only)

Approx. 19.4 sq. metres (208.6 sq. feet)



Accommodation

GROUND FLOOR

Porch

Hallway

Lounge: 13'8 into bay x 13'1 (4.17m x 3.99m)

Dining Room: 15'9 at widest point x 13'5 at widest point (4.80m x 4.09m)

Kitchen: 15'2 x 10'4 (4.63m x 3.15m)

Conservatory: 9'5 x 9'3 (2.87m x 2.82m)

FIRST FLOOR

Landing

Bedroom 1: 14'7 into alcove x 7'7 (4.45m x 2.31m)

Bedroom 2: 12'2 up to fitted cupboard x 10'6 (3.71m x 3.20m)

Balcony

Bedroom 3: 10'5 x 7'8 (3.18m x 2.34m)

Bathroom

SECOND FLOOR

Landing

Loft Space 1

Loft Space 2

OUTSIDE

Front Garden

Rear Garden

Side Access Storage



Main features

- No forward chain
- Balcony with stunning sea views
- Sunny and private rear garden
- A few steps walk to the beautiful Felpham seafront
- Close proximity to local village shops and restaurants



Nearest Schools

Primary Schools: St Mary's Catholic Primary 0.6 miles, Edward Bryant Primary 0.7 miles, Downview Primary 0.9 miles. Secondary Schools: Felpham Community College 0.5 miles, The Regis 1.6 miles, St Philip Howard Catholic High School 3.4 miles. Further Education: Felpham



Transport Information

Train Stations: Bognor Regis 0.8 miles, Barnham 3.3 miles, Ford 4.6 miles



Address

Sea Road, Felpham, Bognor Regis, West Sussex, PO22



Directions

For directions to this property please contact us.



cubitt&west
Helping you move forwards

Call Bognor Branch 01243 867632 ■ cubittandwest.co.uk



- Legal advice should be taken to verify fixtures/fittings, planning, alterations and/or lease details
- Appliances & services are untested, dimensions are approximate and floor plans are not to scale
- Through a Homewise Home For Life Plan people aged 60+ can secure this property for up to 59% less, by purchasing a Lifetime Lease.



40204056/20231103/GS1/SC