



Price
£400,000

Freehold

3x  1x  2x 

**Gloster Drive,
Nyetimber, Bognor
Regis, West Sussex,
PO21**

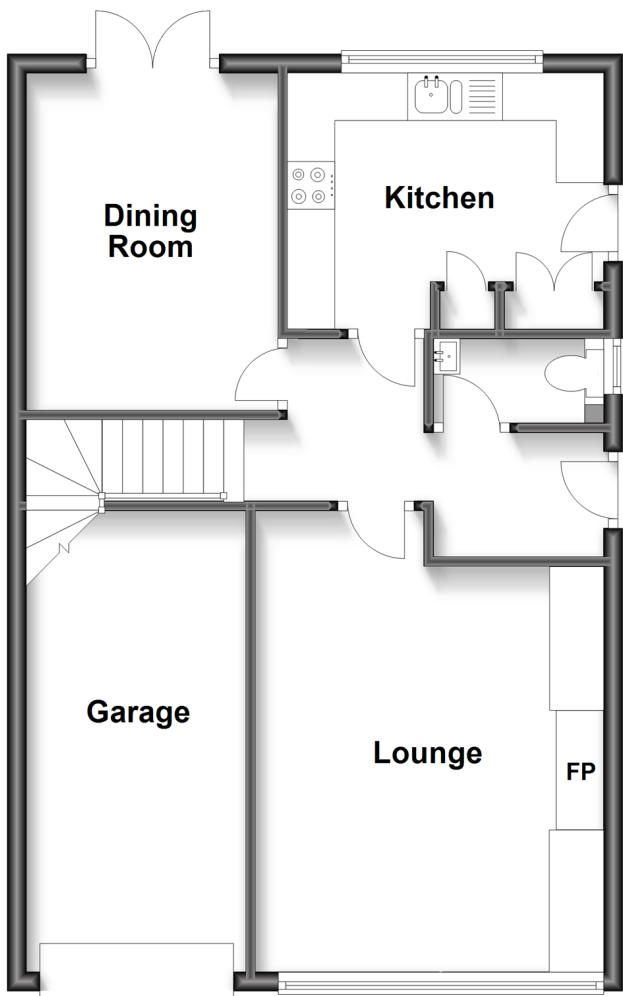
OVER 60?

Secure this property
for up to **59% less!**

cubitt&west
Helping you move forwards

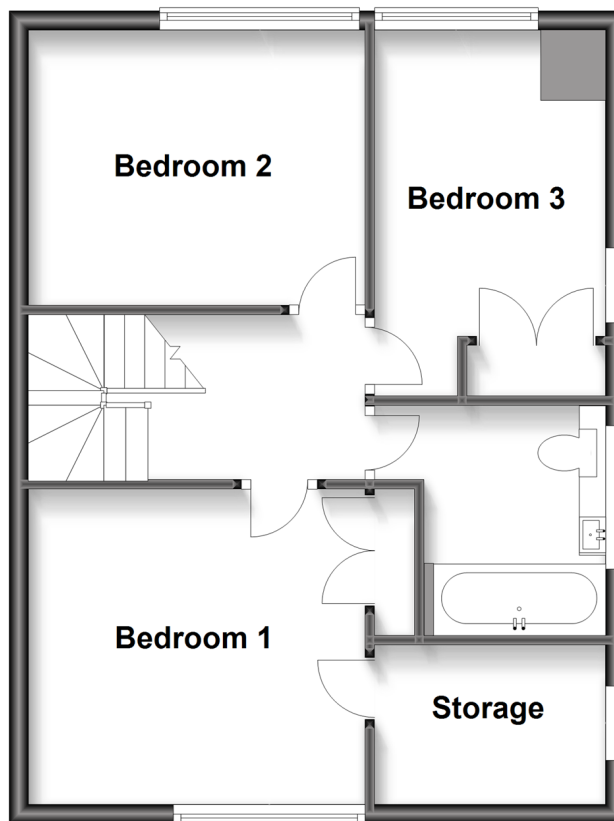
Ground Floor

Approx. 57.3 sq. metres (616.4 sq. feet)



First Floor

Approx. 49.3 sq. metres (531.0 sq. feet)



Accommodation

GROUND FLOOR

Hallway

Cloakroom

Lounge: 16'1 x 12'1 up to fitted cupboard (4.91m x 3.69m)

Kitchen: 10'11 x 8'10 (3.33m x 2.69m)

Dining Room: 11'8 x 8'7 (3.56m x 2.62m)

FIRST FLOOR

Landing

Bedroom 1: 12'2 up to fitted wardrobes x 10'1 (3.71m x 3.08m)

Bedroom 2: 11'10 x 9'8 (3.61m x 2.95m)

Bedroom 3: 11'4 up to fitted wardrobes x 7'11 at widest point (3.46m x 2.41m)

Bathroom

OUTSIDE

Front Garden

Off Street Parking

Garage

Rear Garden



Main features

- Private sunny aspect rear garden
- Beautifully decorated to an excellent standard
- Garage which could be converted, subject to planning consents
- Electric under floor heating in the kitchen
- Ideal popular location close to the sea front, local shops and transport links



Nearest Schools

Primary Schools: Rose Green Junior School 0.3 miles, Nyewood CofE Junior School 1.7 miles, Southway Primary 1.8 miles. Secondary Schools: The Regis 1.9 miles, Felpham Community College 3.3 miles, Arabesque School of Performing Arts 3.5 miles.



Transport Information

Train Stations: Bognor Regis 2.4 miles, Chichester 4.2 miles, Barnham 5.3 miles



Address

Gloster Drive, Nyetimber, Bognor Regis, West Sussex, PO21



Directions

For directions to this property please contact us.



cubitt&west
Helping you move forwards

Call Bognor Regis Branch 01243 867632 ■ cubittandwest.co.uk



■ Legal advice should be taken to verify fixtures/fittings, planning, alterations and/or lease details ■ Appliances & services are untested, dimensions are approximate and floor plans are not to scale
■ Through a Homewise Home For Life Plan people aged 60+ can secure this property for up to 59% less, by purchasing a Lifetime Lease.



40204058/20230303/SC/SC