



Price

£160,000

Leasehold

2x  1x  1x 

**Gilwynes, Aldwick Fields,
Bognor Regis, West
Sussex, PO21**

OVER 60?

Secure this property
for up to **59% less!**

cubitt&west
Helping you move forwards



Main features

- Retirement flat with no forward chain
- Heaps of natural light
- Beautifully maintained communal gardens
- Vendor advises of a new lease upon completion
- Sought after cul-de-sac in stunning Aldwick Fields

Accommodation

FIRST FLOOR

Landing

Lounge: 19'1 at widest point x 13'8 at widest point (5.82m x 4.17m)

Kitchen: 8'4 x 7'6 (2.54m x 2.29m)

Bedroom 1: 12'11 x 9'0 (3.94m x 2.75m)

Bedroom 2: 9'6 x 8'9 (2.90m x 2.67m)

Shower Room

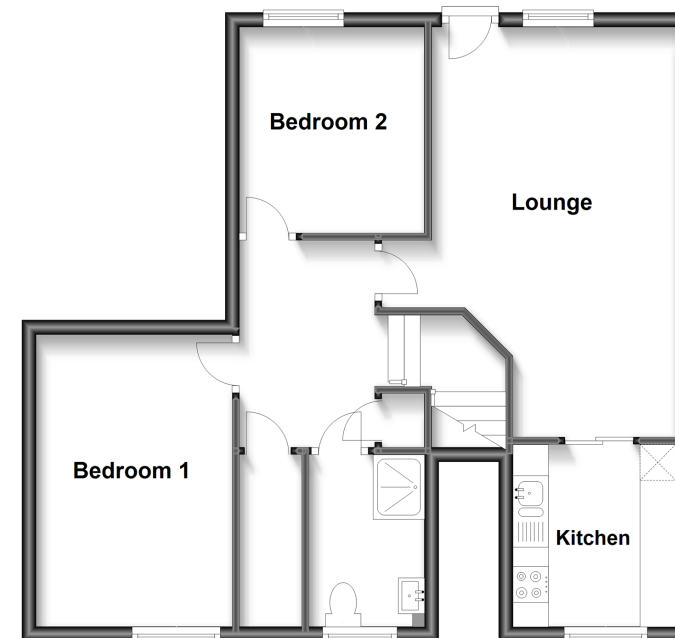
OUTSIDE

Resident's Parking

Communal Gardens

First Floor

Approx. 60.2 sq. metres (648.0 sq. feet)



Call Bognor Regis - 01243 867632 ■ cubittandwest.co.uk

■ Legal advice should be taken to verify fixtures/fittings, planning, alterations and/or lease details
 ■ Through a Homewise Home For Life Plan people aged 60+ can secure this property for up to 59% less, by purchasing a Lifetime Lease.

■ Appliances & services are untested, dimensions are approximate and floor plans are not to scale



40204077/20230620/SC/SC