



Price
£450,000

Freehold

3x  1x  2x 

**Blondell Drive, Rose
Green, Bognor Regis,
West Sussex, PO21**

OVER 60?

Secure this property
for up to **59% less!**

cubitt&west
Helping you move forwards

Accommodation

GROUND FLOOR

Entrance Hall

Cloakroom

Lounge: 18'0 x 9'9 (5.49m x 2.97m)

Dining Area: 18'11 at widest point x 9'9 (5.77m x 2.97m)

Kitchen: 18'0 at widest point x 11'0 (5.49m x 3.36m)

FIRST FLOOR

Landing

Bedroom 1: 13'7 up to fitted wardrobes x 10'9 (4.14m x 3.28m)

Bedroom 2: 11'8 up to fitted wardrobes x 10'9 (3.56m x 3.28m)

Bedroom 3: 10'4 x 7'4 (3.15m x 2.24m)

Bathroom

OUTSIDE

Front Garden

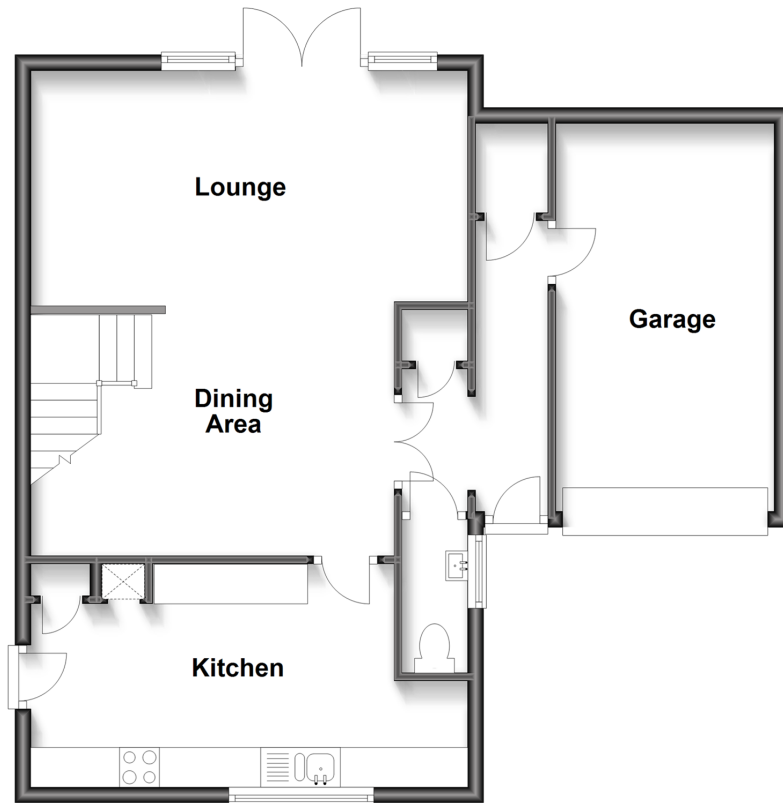
Off Street Parking

Integral Garage

Rear Garden

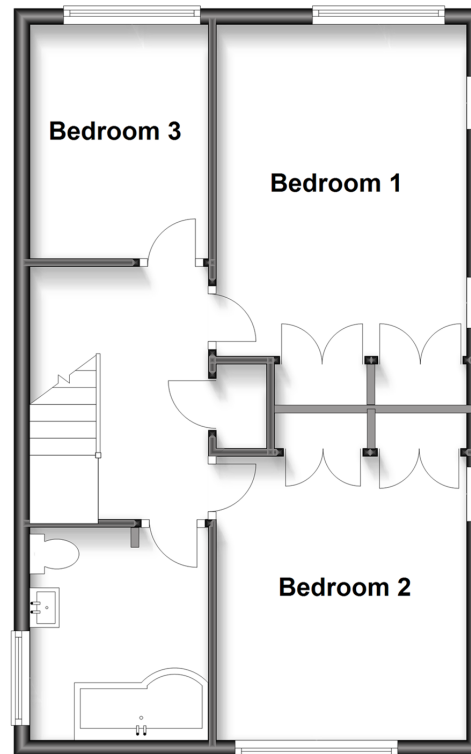
Ground Floor

Approx. 68.3 sq. metres (734.8 sq. feet)



First Floor

Approx. 49.5 sq. metres (532.5 sq. feet)





Main features

- Beautifully presented to a high standard
- Rose Green shopping parade conveniently close by
- Close to highly regarded local school
- The vendor informs us the property has been re-wired and re-plumbed
- Re-fitted kitchen with under floor heating



Nearest Schools

Primary Schools: Rose Green Junior School 0.4 miles, Nyewood CofE Junior School 1.0 miles, Southway Primary 1.2 miles. Secondary Schools: The Regis 1.3 miles, Felpham Community College 2.6 miles, Arabesque School of Performing Arts 3.6 miles.



Transport Information

Train Stations: Bognor Regis 1.7 miles, Chichester 4.4 miles, Barnham 4.7 miles



Address

Blondell Drive, Rose Green, Bognor Regis, West Sussex, PO21



Directions

For directions to this property please contact us.



cubitt&west
Helping you move forwards

Call Bognor Branch 01243 867632 ■ [cubittandwest.co.uk](https://www.cubittandwest.co.uk)



■ Legal advice should be taken to verify fixtures/fittings, planning, alterations and/or lease details ■ Appliances & services are untested, dimensions are approximate and floor plans are not to scale
■ Through a Homewise Home For Life Plan people aged 60+ can secure this property for up to 59% less, by purchasing a Lifetime Lease.



40204105/20230324/GS1/SC