



Guide Price
£350,000

Freehold

2x  1x  1x 

**Christchurch Crescent,
Bognor Regis, West
Sussex PO21**

OVER 60?

Secure this property
for up to **59% less!**

cubitt&west
Helping you move forwards



Main features

- No forward chain
- Recently constructed and finished to a high standard
- Quiet road in sought after West Meads area
- Ideal for someone looking for a low maintenance home
- Shops close to hand
- Local green space nearby

Accommodation

GROUND FLOOR

Hallway

Bedroom 1: 16'6 at widest point x 10'4 at widest point (5.03m x 3.15m)

Bedroom 2: 9'5 x 7'11 (2.87m x 2.41m)

Bathroom

Kitchen: 10'8 x 7'11 (3.25m x 2.41m)

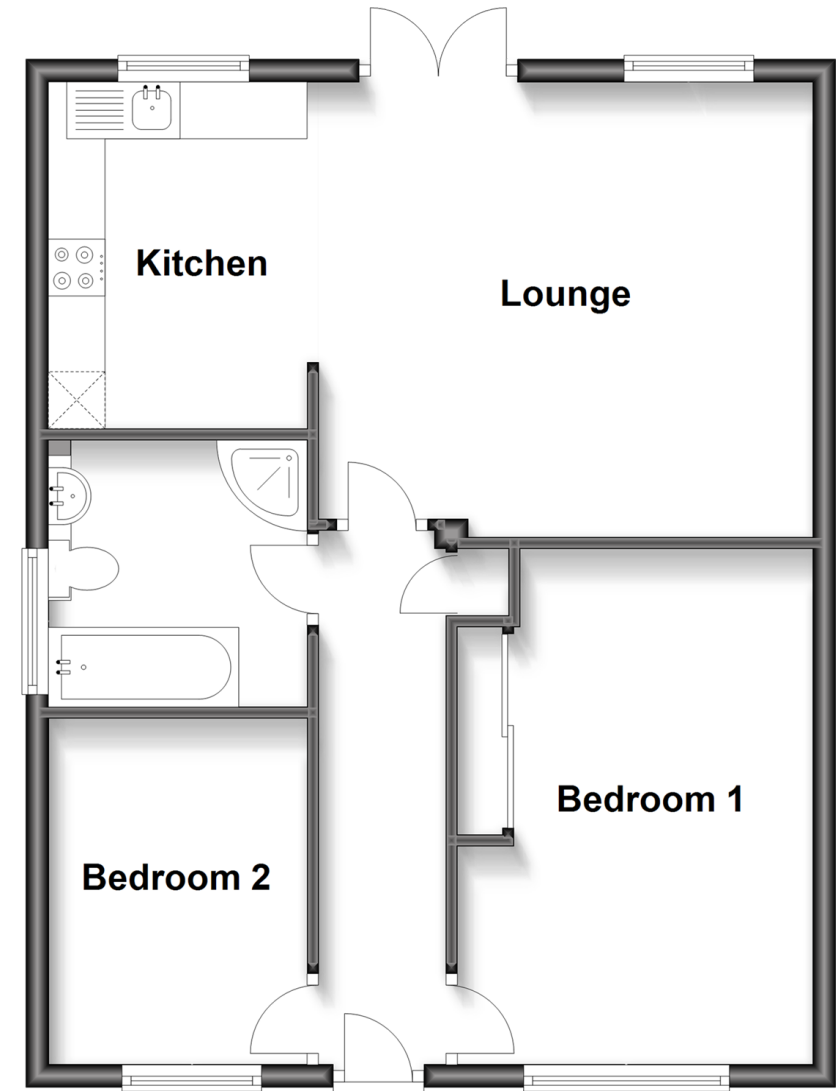
Lounge: 14'5 x 11'5 (4.40m x 3.48m)

OUTSIDE

Front Garden
Off Street Parking
Rear Garden

Ground Floor

Approx. 58.2 sq. metres (626.9 sq. feet)



Call Bognor - 01243 867632 ■ cubittandwest.co.uk

- Legal advice should be taken to verify fixtures/fittings, planning, alterations and/or lease details
- Appliances & services are untested, dimensions are approximate and floor plans are not to scale
- Through a Homewise Home For Life Plan people aged 60+ can secure this property for up to 59% less, by purchasing a Lifetime Lease.



40204106/20240412/GS1/SC