



**Price**  
**£280,000**

**Freehold**

2x  1x  1x 

**Whiteways, Bognor  
Regis, West Sussex  
PO22**

**OVER 60?**

Secure this property  
for up to **59% less!**

**cubitt&west**  
Helping you move forwards





## Main features

- No forward chain
- Sought after residential road
- Close to transport links
- Ideal for first time buyer or buy to let investors alike
- Fantastic sized rear garden with heaps of potential

## Accommodation

### GROUND FLOOR

Hall

Lounge: 16'2 x 11'0 (4.93m x 3.36m)

Kitchen: 12'0 x 9'1 (3.66m x 2.77m)

Utility

Bathroom

### FIRST FLOOR

Landing

Bedroom 1: 12'7 x 11'1 (3.84m x 3.38m)

Bedroom 2: 12'0 x 8'9 (3.66m x 2.67m)

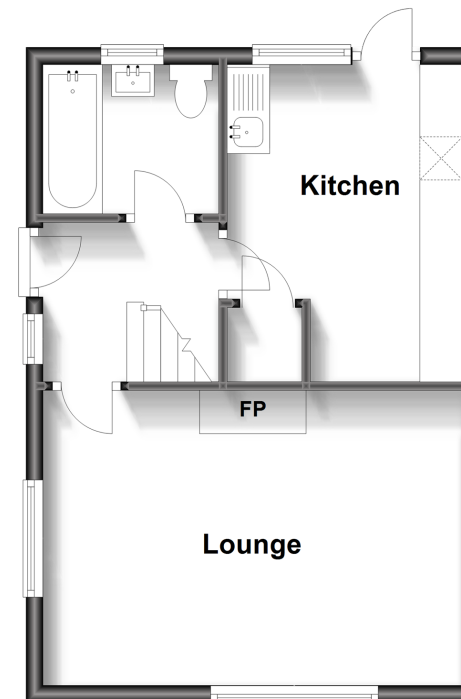
### OUTSIDE

Front Garden

Rear Garden

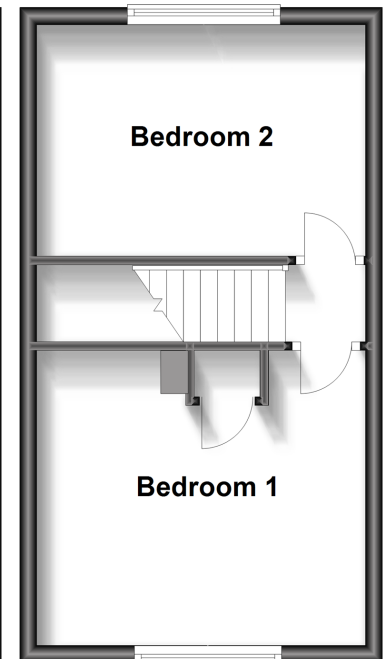
### Ground Floor

Approx. 35.5 sq. metres (382.4 sq. feet)



### First Floor

Approx. 27.9 sq. metres (300.4 sq. feet)



**Call Bognor - 01243 867632 ■ [cubittandwest.co.uk](http://cubittandwest.co.uk)**

- Legal advice should be taken to verify fixtures/fittings, planning, alterations and/or lease details
- Appliances & services are untested, dimensions are approximate and floor plans are not to scale
- Through a Homewise Home For Life Plan people aged 60+ can secure this property for up to 59% less, by purchasing a Lifetime Lease.



40204108/20230722/GS1/SC