



Price

£190,000

Leasehold

1x  1x  1x 

**Crimsham Road, Bognor
Regis, West Sussex,
PO21**

cubitt&west
Helping you move forwards



Main features

- Ideal first time buy
- Sunny aspect private rear garden
- Internal decoration is modern and neutral
- Sought after location close to transport links
- Extremely well appointed rooms and great layout

Accommodation

GROUND FLOOR

Hallway

Lounge/Dining Room: 13'4 at widest point x 12'5 at widest point (4.07m x 3.79m)

Kitchen: 9'1 x 9'1 (2.77m x 2.77m)

Bedroom: 14'4 x 9'11 (4.37m x 3.02m)

Bathroom

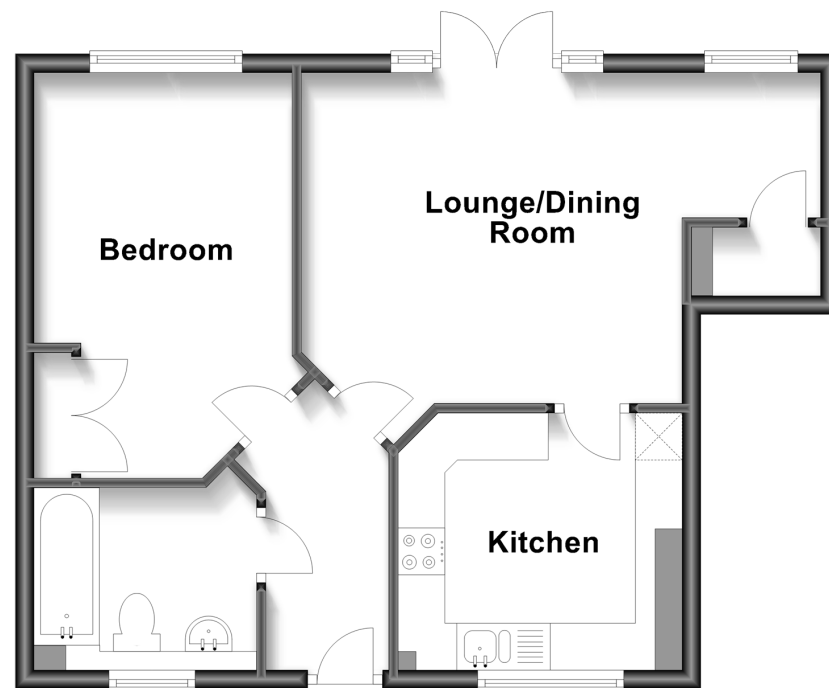
OUTSIDE

Allocated Parking

Private Rear Garden

Ground Floor

Approx. 47.7 sq. metres (513.7 sq. feet)



Call Bognor - 01243 867632 ■ cubittandwest.co.uk

- Legal advice should be taken to verify fixtures/fittings, planning, alterations and/or lease details
- Appliances & services are untested, dimensions are approximate and floor plans are not to scale