

OVER 60?

Secure this property
for up to **59% less!**



Price

£110,000

Leasehold

1x  1x  1x 

Harfield Court, Lyon Street, Bognor Regis,
West Sussex, PO21

cubitt&west
Helping you move forwards



Main features

- Retirement apartment
- No onward chain
- Residents parking space which is a real plus being in town
- Close to local shops and transport links
- Hotham Park is a short walk away
- A short walk to the beach

Accommodation

GROUND FLOOR

Hall

Lounge: 14'3 at widest point x 10'4 at widest point (4.35m x 3.15m)

Kitchen: 8'7 x 6'4 (2.62m x 1.93m)

Bedroom: 13'5 x 9'8 (4.09m x 2.95m)

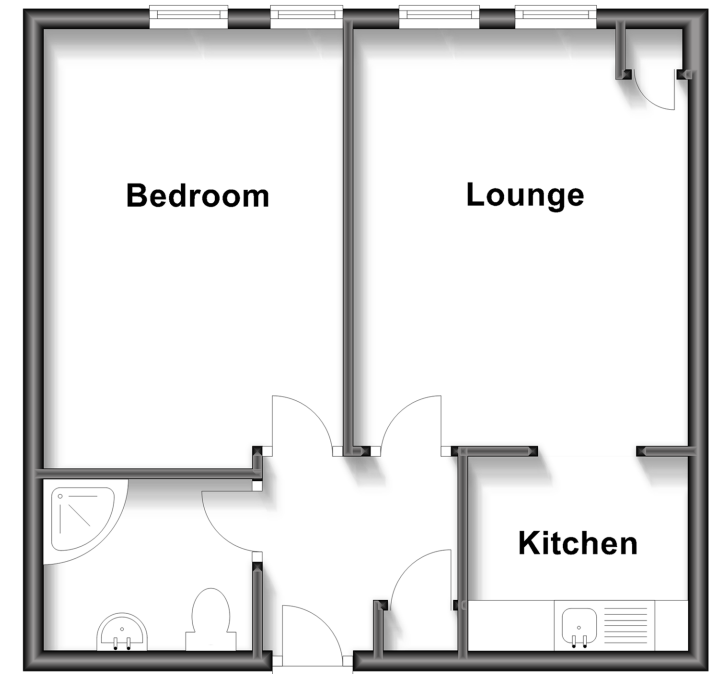
Shower Room

OUTSIDE

Residents' Parking

Ground Floor

Approx. 39.4 sq. metres (424.2 sq. feet)



Call Bognor Regis - 01243 867632 ■ cubittandwest.co.uk

- Legal advice should be taken to verify fixtures/fittings, planning, alterations and/or lease details
- Appliances & services are untested, dimensions are approximate and floor plans are not to scale
- Through a Homewise Home For Life Plan people aged 60+ can secure this property for up to 59% less, by purchasing a Lifetime Lease.



40204152/20230627/GS1/SC