

OVER 60?

Secure this property
for up to **59% less!**



Guide Price
£450,000
Freehold

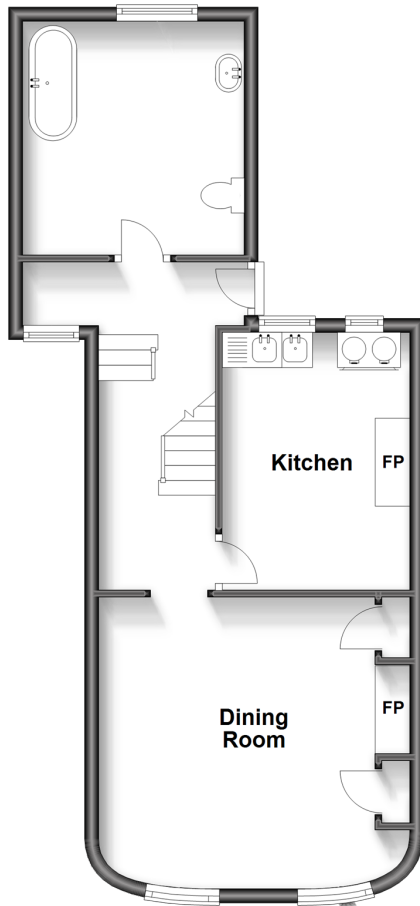
4x  1x  2x 

Glamis Street, Bognor Regis, West Sussex
PO21

cubitt&west
Helping you move forwards

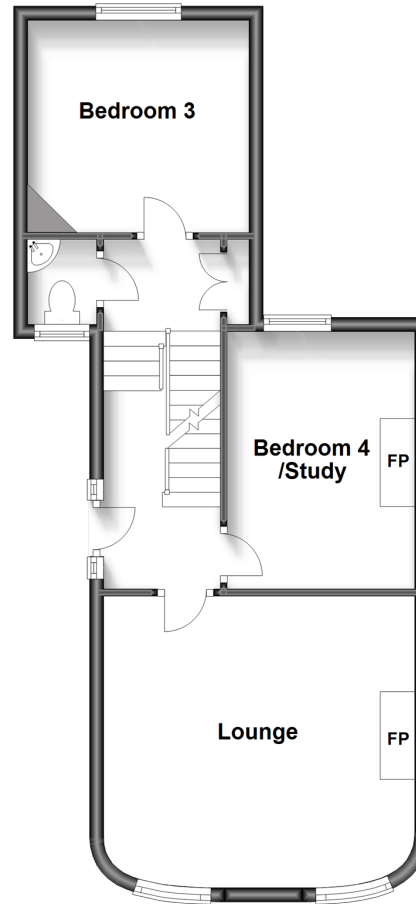
Split Level Lower Ground Floor

Approx. 48.0 sq. metres (516.2 sq. feet)



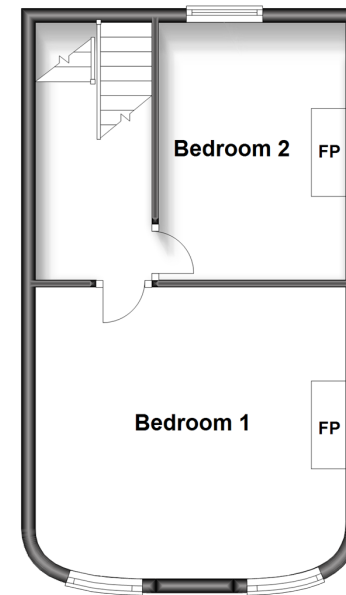
Split Level Ground Floor

Approx. 48.0 sq. metres (516.1 sq. feet)



First Floor

Approx. 34.0 sq. metres (366.1 sq. feet)



Accommodation

LOWER GROUND FLOOR

Landing

Dining Room: 14'6 at widest point x 13'3 up to fitted units (4.42m x 4.04m)

Kitchen: 12'1 x 8'10 (3.69m x 2.69m)

Bathroom

GROUND FLOOR

Hallway

Lounge: 15'3 at widest point x 14'6 at widest point (4.65m x 4.42m)

Bedroom 4/Study: 12'5 x 8'10 (3.79m x 2.69m)

Cloakroom

Bedroom 3: 10'10 x 10'6 (3.30m x 3.20m)

FIRST FLOOR

Landing

Bedroom 1: 15'3 at widest point x 14'6 into recess (4.65m x 4.42m)

Bedroom 2: 12'6 at widest point x 8'10 into recess (3.81m x 2.69m)

OUTSIDE

Rear Garden



Main features

- Desirable Grade II Listed Period property
- 2 parking permits available
- Within walking distance of the historic Hotham Park and the beach
- Character features including ornate fireplaces and an Aga
- Conveniently placed for transport links including train station with easy commute to London



Nearest Schools

Primary Schools: St Mary's Catholic Primary 0.2 miles, Edward Bryant Primary 0.3 miles, South Bersted CofE Primary 0.9 miles. Secondary Schools: Felpham Community College 0.7 miles, The Regis 1.2 miles, St Philip Howard Catholic High School 3.5 miles.



Transport Information

Train Stations: Bognor Regis 0.4 miles, Barnham 3.4 miles, Ford 5.0 miles



Address

Glamis Street, Bognor Regis, West Sussex PO21



Directions

For directions to this property please contact us.



cubitt&west
Helping you move forwards

Call Bognor Branch 01243 867632 ■ cubittandwest.co.uk



■ Legal advice should be taken to verify fixtures/fittings, planning, alterations and/or lease details ■ Appliances & services are untested, dimensions are approximate and floor plans are not to scale
■ Through a Homewise Home For Life Plan people aged 60+ can secure this property for up to 59% less, by purchasing a Lifetime Lease.



40204164/20240412/GS1/BH