



Guide Price
£180,000

Leasehold

2x  1x  1x 

**Aldwick Road, Bognor
Regis, West Sussex,
PO21**

OVER 60?

Secure this property
for up to **59% less!**

cubitt & west
Helping you move forwards



Main features

- Loft storage space
- Allocated parking located to the rear
- Extremely well appointed rooms
- Character conversion offering heaps of natural light
- A short walk to the stunning Aldwick sea front

Accommodation

SECOND FLOOR

Landing

Lounge/Kitchen: 18'1 at widest point x 13'5 at widest point (5.52m x 4.09m)

Bathroom

Bedroom 1: 12'10 x 10'7 (3.91m x 3.23m)

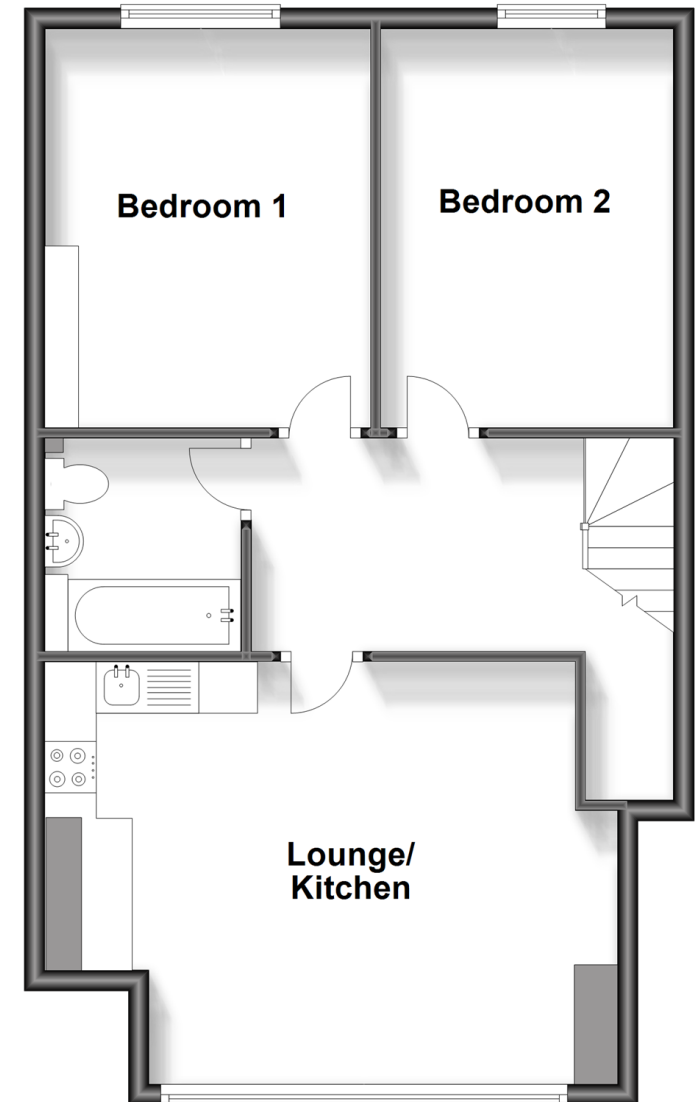
Bedroom 2: 12'10 x 9'3 (3.91m x 2.82m)

OUTSIDE

Allocated Parking

Second Floor

Approx. 60.1 sq. metres (647.4 sq. feet)



Call Bognor - 01243 867632 ■ cubittandwest.co.uk

- Legal advice should be taken to verify fixtures/fittings, planning, alterations and/or lease details
- Appliances & services are untested, dimensions are approximate and floor plans are not to scale
- Through a Homewise Home For Life Plan people aged 60+ can secure this property for up to 59% less, by purchasing a Lifetime Lease.



40204225/20240212/SC/SC