

OVER 60?

Secure this property
for up to **59% less!**



Guide Price
£220,000
Leasehold

2x  1x  1x 

Pendleton House, Pendleton Place, Bognor
Regis, West Sussex PO21

cubitt&west
Helping you move forwards



Main features

- Cul-de-sac location
- Heaps of natural light
- Modern internal decoration with hard flooring
- Extremely well appointed room sizes
- Ideal first time buy or commuters as there are excellent transport links

Accommodation

FIRST FLOOR

Landing

Lounge/Kitchen: 23'2 maximum (7.07m) x 11'8 at widest point (3.56m) narrowing to 10'0 (3.05m)

Bathroom

Bedroom 1: 13'1 x 10'10 (3.99m x 3.30m)

Bedroom 2: 12'6 x 10'10 (3.81m x 3.30m)

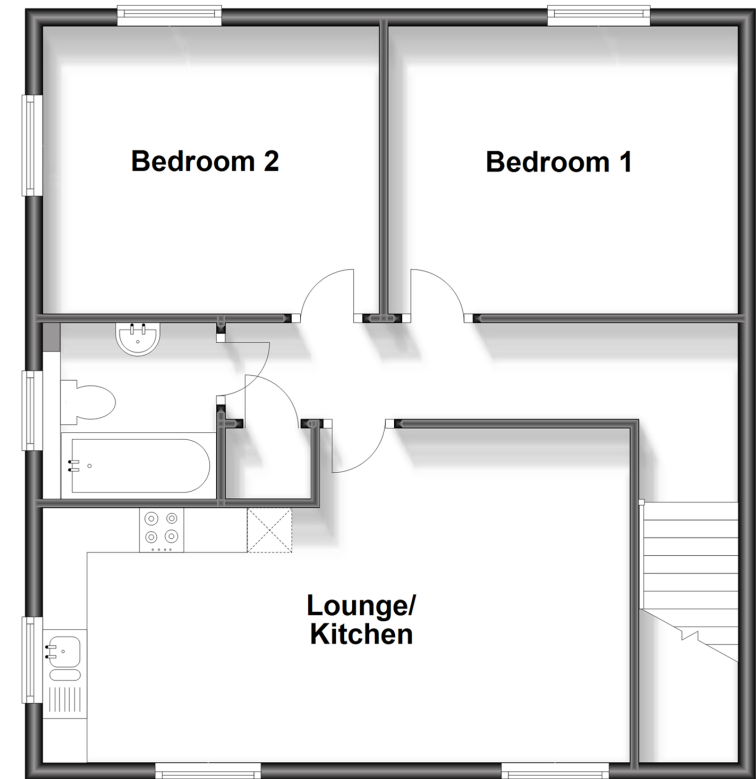
OUTSIDE

Communal Gardens

2 x Allocated Parking Spaces

First Floor

Approx. 64.9 sq. metres (699.1 sq. feet)



Call Bognor - 01243 867632 ■ cubittandwest.co.uk

- Legal advice should be taken to verify fixtures/fittings, planning, alterations and/or lease details
- Appliances & services are untested, dimensions are approximate and floor plans are not to scale
- Through a Homewise Home For Life Plan people aged 60+ can secure this property for up to 59% less, by purchasing a Lifetime Lease.



40204285/20231127/IH/SC