



**Price**  
**£250,000**

**Freehold**

2x  1x  1x 

**Corbishley Road,  
Bognor Regis, West  
Sussex PO22**

**cubitt&west**  
Helping you move forwards



## Main features

- Modern open plan style interior
- Well appointed bedrooms
- Excellent transport links with bus route in nearby Chichester Road
- Ideal first time buy or buy to let investors
- A short distance from local schools and shops

## Accommodation

### GROUND FLOOR

Entrance Hall  
Cloakroom  
Lounge/Kitchen: 17'5 x 14'4 (5.31m x 4.37m)

### FIRST FLOOR

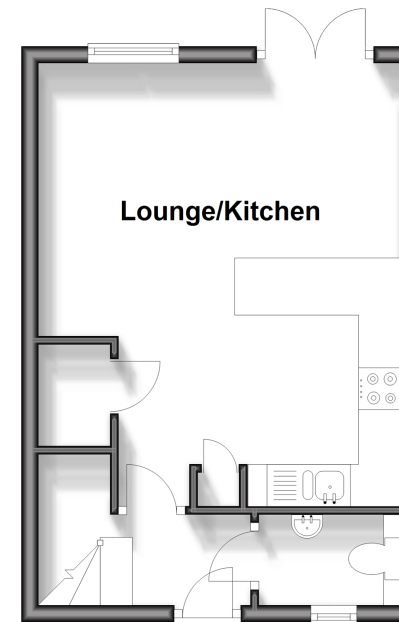
Landing  
Bedroom 1: 11'2 x 9'2 (3.41m x 2.80m)  
Bedroom 2: 11'10 x 7'7 (3.61m x 2.31m)  
Bathroom

### OUTSIDE

Rear Garden  
Allocated Parking

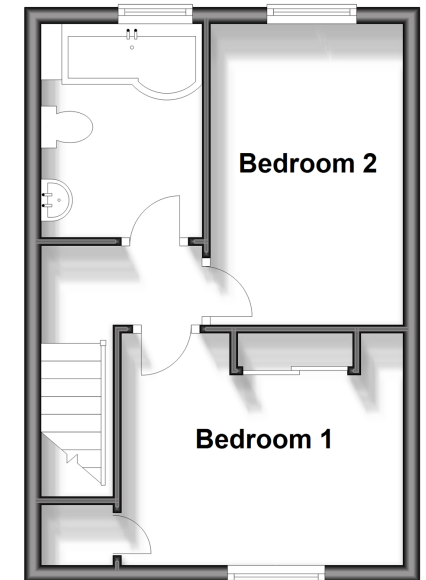
### Ground Floor

Approx. 28.1 sq. metres (302.3 sq. feet)



### First Floor

Approx. 28.1 sq. metres (302.3 sq. feet)



**Call Bognor - 01243 867632 ■ cubittandwest.co.uk**

■ The seller is a person connected with Cubitt & West as defined in the Estate Agents Act 1979  
■ Appliances & services are untested, dimensions are approximate and floor plans are not to scale

■ Legal advice should be taken to verify fixtures/fittings, planning, alterations and/or lease details