



Guide Price
£500,000

Freehold

3x  1x  1x 

**Southover Way,
Hunston, Chichester,
West Sussex, PO20**

OVER 60?

Secure this property
for up to **59% less!**

cubitt & west
Helping you move forwards



Main features

- Detached chalet bungalow with double garage & ample parking
- Spacious living room with wood burner
- No forward chain
- Lovely garden with decking area
- Quiet cul-de-sac position on private road

Accommodation

GROUND FLOOR

Hallway

Living Room: 23'4 x 12'0 (7.12m x 3.66m)

Cloakroom

Kitchen/Dining Room: 22'2 x 17'6 (6.76m x 5.34m)

Bedroom 3: 11'4 x 10'3 (3.46m x 3.13m)

FIRST FLOOR

Landing

Bedroom 1: 13'0 x 11'4 (3.97m x 3.46m)

Bedroom 2: 15'4 x 8'9 (4.68m x 2.67m)

Bathroom: 8'4 x 7'7 (2.54m x 2.31m)

OUTSIDE

Double Garage

Off Road Parking

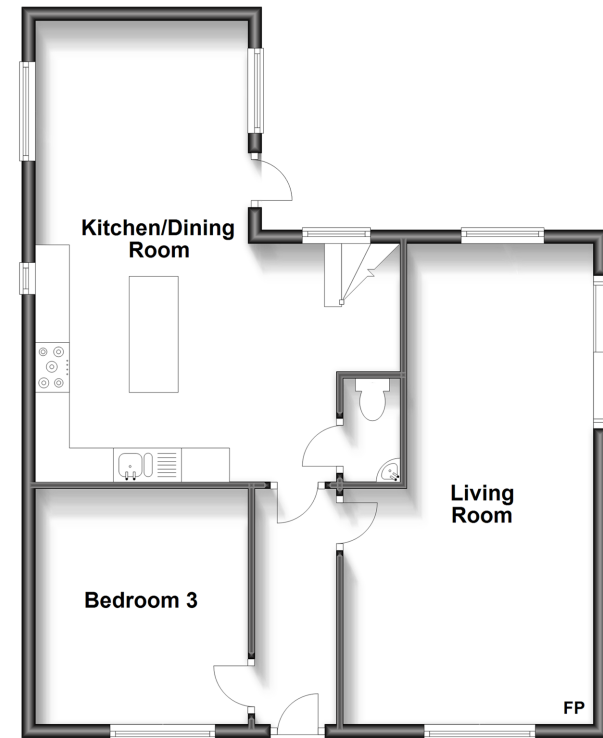
Rear Garden

Shed

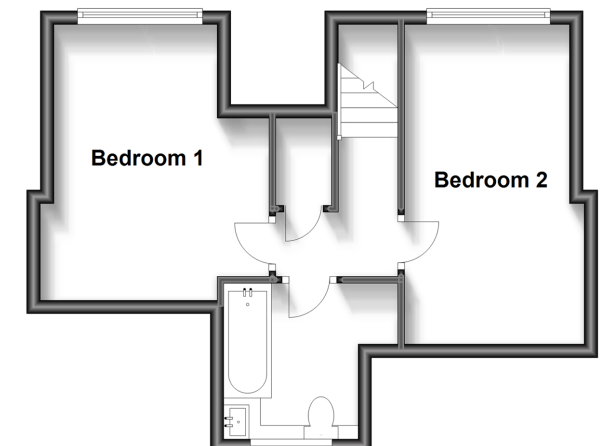
Call Chichester - 01243 786581 ■ cubittandwest.co.uk

- Legal advice should be taken to verify fixtures/fittings, planning, alterations and/or lease details
- Appliances & services are untested, dimensions are approximate and floor plans are not to scale
- Through a Homewise Home For Life Plan people aged 60+ can secure this property for up to 59% less, by purchasing a Lifetime Lease.

Ground Floor
Approx. 68.1 sq. metres (732.6 sq. feet)



First Floor
Approx. 34.9 sq. metres (375.2 sq. feet)



40409082/20231016/JH/RC