



OVER 60?

You could get up to
59% off the price!*



Video Tour available

Price
£395,000

Freehold

2x  1x  2x 

**Grove Road, Chichester,
West Sussex, PO19**

cubitt&west
Helping you move forwards



Main features

- End of terrace home with great sized bedrooms and period features
- Large bathroom with separate shower & bath
- Scope to extend & develop into the loft (subject to consents)
- Sunny, sizeable garden
- Easy access to the city centre
- Good local transport links

Accommodation

GROUND FLOOR

Hallway

Dining Room: 12'8 x 9'9 (3.86m x 2.97m)

Lounge: 11'7 x 9'4 (3.53m x 2.85m)

Kitchen: 13'8 x 7'9 (4.17m x 2.36m)

FIRST FLOOR

Landing

Bedroom 1: 12'8 x 9'10 (3.86m x 3.00m)

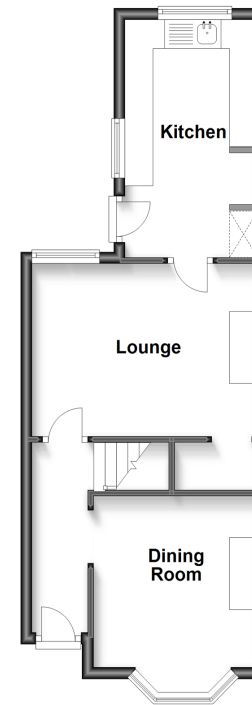
Bedroom 2: 9'9 x 8'11 (2.97m x 2.72m)

Bathroom: 13'8 x 7'9 (4.17m x 2.36m)

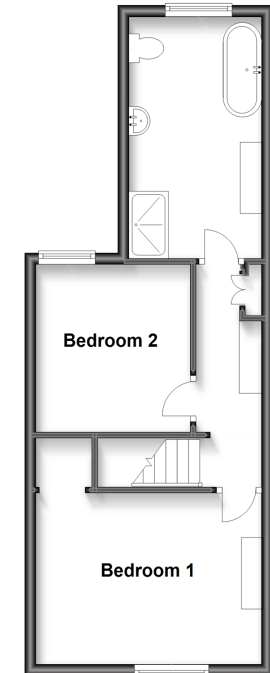
OUTSIDE

Front & Rear Gardens

Ground Floor
Approx. 37.6 sq. metres (404.8 sq. feet)



First Floor
Approx. 38.0 sq. metres (408.6 sq. feet)



Call Chichester - 01243 786581 ■ cubittandwest.co.uk

- Legal advice should be taken to verify fixtures/fittings, planning, alterations and/or lease details
- Our Homewise partnership offer a 'Home for Life' plan to buyers over 60, granting a lifetime lease for your protection and reducing the purchase price by up to 59%

- Appliances & services are untested, dimensions are approximate and floor plans are not to scale



40412856/20220701/JH/RC