



Price

£210,000

Leasehold

2x  1x  1x 

**Heron Court, Elizabeth
Road, Chichester, West
Sussex, PO19**

OVER 60?

You could get up to
59% off the price!*



Video Tour available

cubitt&west
Helping you move forwards



Main features

- Large, ground floor apartment with plenty of storage throughout
- Spacious open plan living area
- Benefits from communal grounds and ample residents' parking
- Short walk to the city centre
- Ideal first home or investment

Accommodation

GROUND FLOOR

Entrance Hall

Lounge/Diner: 17'7 x 12'2 (5.36m x 3.71m)

Kitchen: 14'0 x 6'2 (4.27m x 1.88m)

Bedroom 1: 15'0 x 8'0 (4.58m x 2.44m)

Bedroom 2: 11'7 x 10'5 (3.53m x 3.18m)

Bathroom

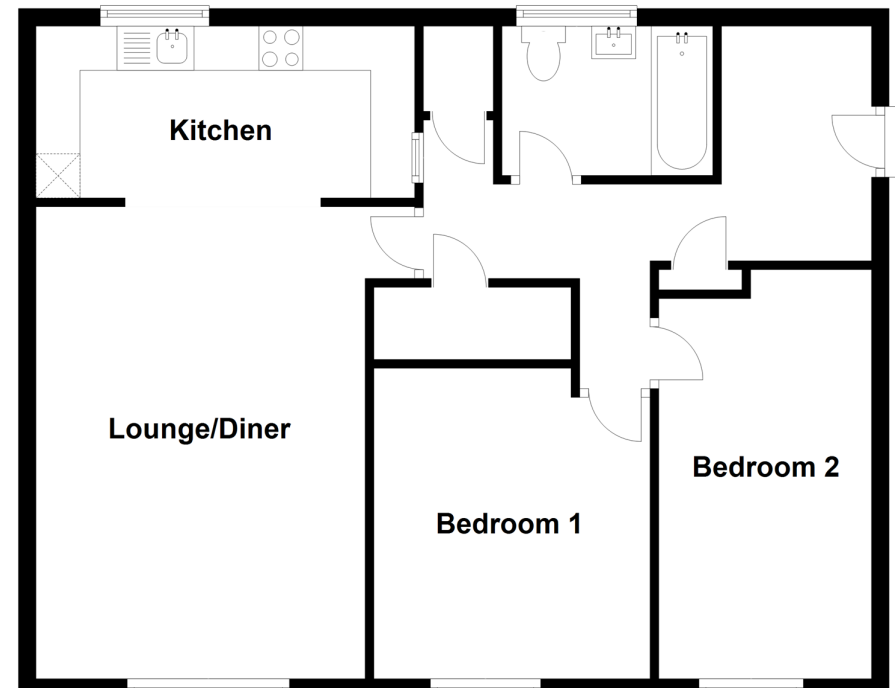
OUTSIDE

Residents' Parking

Communal Gardens

Ground Floor

Approx. 70.2 sq. metres (755.7 sq. feet)



Call Chichester - 01243 786581 ■ cubittandwest.co.uk

■ Legal advice should be taken to verify fixtures/fittings, planning, alterations and/or lease details
 ■ Our Homewise partnership offer a 'Home for Life' plan to buyers over 60, granting a lifetime lease for your protection and reducing the purchase price by up to 59%

■ Appliances & services are untested, dimensions are approximate and floor plans are not to scale