



**Price**  
**£250,000**

**Freehold**

2x  1x  1x 

**Mosse Gardens,  
Fishbourne, Chichester,  
West Sussex, PO19**



**Video Tour available**

**cubitt&west**  
Helping you move forwards





## Main features

- Beautiful terraced house with spacious bedrooms & ample storage
- Located in a quiet cul-de-sac
- Benefits from a conservatory & low-maintenance, sunny garden
- 2 allocated parking spaces
- Ideal first time buyer property
- Only a short walk from the train station

## Accommodation

### GROUND FLOOR

Porch & Hallway

Kitchen: 11'8 x 6'0 (3.56m x 1.83m)

Lounge: 13'8 x 11'10 (4.17m x 3.61m)

Conservatory: 11'11 x 6'8 (3.63m x 2.03m)

### FIRST FLOOR

Landing

Bedroom 1: 12'1 x 9'2 (3.69m x 2.80m)

Bedroom 2: 9'10 x 9'3 (3.00m x 2.82m)

Bathroom: 6'3 x 5'4 (1.91m x 1.63m)

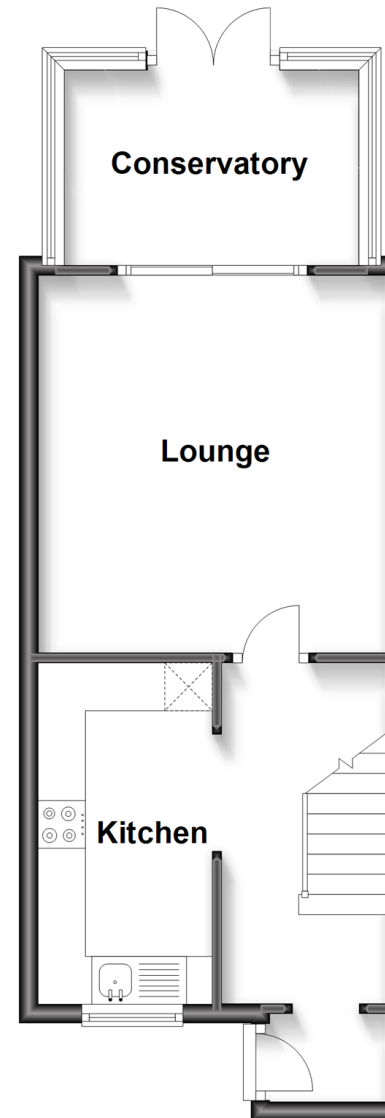
### OUTSIDE

Rear Garden

Allocated Parking

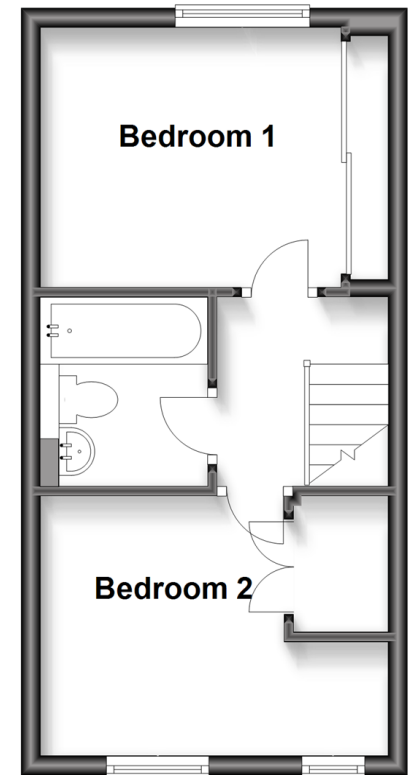
## Ground Floor

Approx. 36.0 sq. metres (387.6 sq. feet)



## First Floor

Approx. 28.1 sq. metres (302.1 sq. feet)



**Call Chichester - 01243 786581 ■ [cubittandwest.co.uk](http://cubittandwest.co.uk)**

- Legal advice should be taken to verify fixtures/fittings, planning, alterations and/or lease details
- Appliances & services are untested, dimensions are approximate and floor plans are not to scale



40414360/20230609/RC/RC