



Price
£320,000

Freehold

3x  1x  1x 

**Elm Road, Westergate,
Chichester, West
Sussex, PO20**

OVER 60?

Secure this property
for up to **59% less!**

cubitt&west
Helping you move forwards



Main features

- Sizeable, end of terrace house with open plan kitchen/diner
- Ideal purchase for first time buyers or investors
- Spacious conservatory
- Garage en-bloc
- Good sized, low maintenance rear garden
- Peaceful village location with direct links to Bognor Regis & Chichester

Accommodation

GROUND FLOOR

Entrance Hall

Lounge: 14'3 x 9'6 (4.35m x 2.90m)

Kitchen/Diner: 17'11 x 7'11 into recess (5.46m x 2.41m)

Conservatory: 17'1 x 8'2 (5.21m x 2.49m)

FIRST FLOOR

Landing

Bedroom 1: 10'7 x 9'4 (3.23m x 2.85m)

Bedroom 2: 9'9 up to fitted wardrobes x 7'9 (2.97m x 2.36m)

Bedroom 3: 7'2 x 5'10 (2.19m x 1.78m)

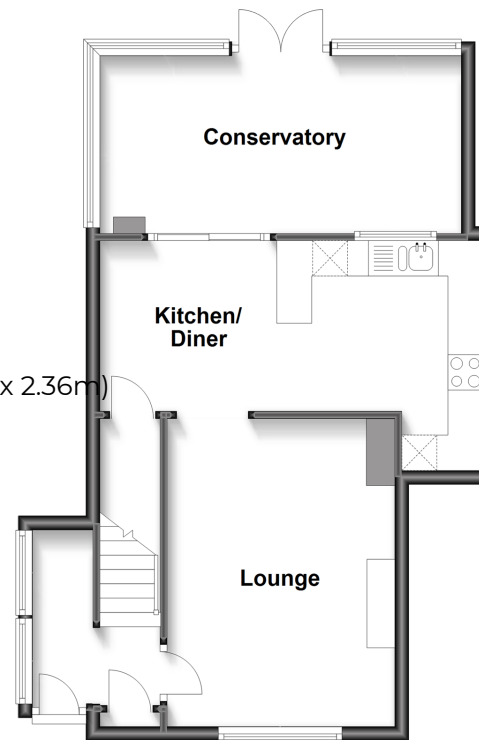
Bathroom: 6'2 x 5'6 (1.88m x 1.68m)

OUTSIDE

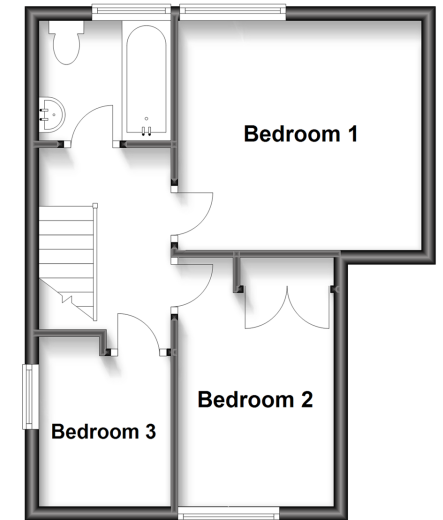
Front & Rear Gardens

Garage En-Bloc

Ground Floor
Approx. 48.9 sq. metres (526.6 sq. feet)



First Floor
Approx. 33.0 sq. metres (355.7 sq. feet)



Call Chichester - 01243 786581 ■ cubittandwest.co.uk

■ Legal advice should be taken to verify fixtures/fittings, planning, alterations and/or lease details
■ Through a Homewise Home For Life Plan people aged 60+ can secure this property for up to 59% less, by purchasing a Lifetime Lease.

■ Appliances & services are untested, dimensions are approximate and floor plans are not to scale