



**Offers In
Excess Of
£275,000
Leasehold**

2x  2x  1x 

**Lillywhite Road,
Chichester, West
Sussex, PO18**

cubitt&west
Helping you move forwards



Main features

- Immaculately presented terraced house in private development
- Desirable location in Chichester
- Light & spacious accommodation throughout
- Easy access onto the A27
- Benefits from allocated parking
- Ideal first home or investment opportunity
- Beautifully, landscaped garden
- Close to the Goodwood Estate & South Downs National Park

Accommodation

GROUND FLOOR

Entrance Hall
Cloakroom
Lounge/Diner: 15'7 x 13'4 (4.75m x 4.07m)
Kitchen: 11'10 x 5'11 (3.61m x 1.80m)

FIRST FLOOR

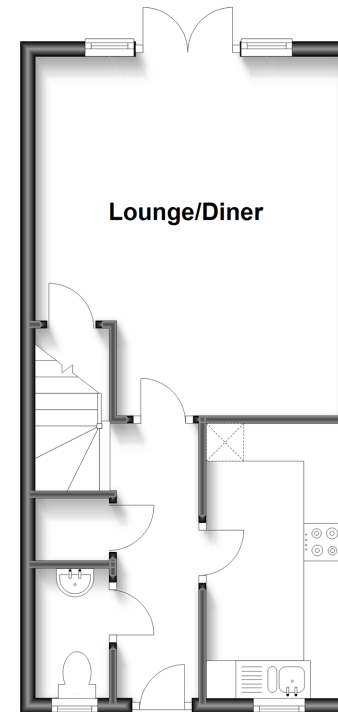
Bedroom 1 : 11'6 x 9'7 (3.51m x 2.92m)
En-Suite Shower Room
Bedroom 2: 11'4 x 8'8 (3.46m x 2.64m)
Bathroom

OUTSIDE

Rear Garden
Allocated Parking

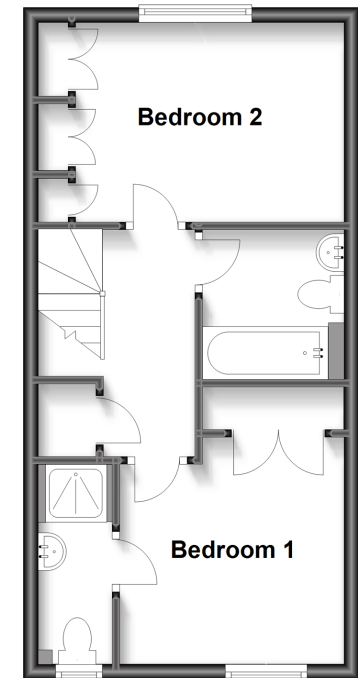
Ground Floor

Approx. 34.9 sq. metres (375.7 sq. feet)



First Floor

Approx. 35.1 sq. metres (378.2 sq. feet)



Call Chichester - 01243 786581 ■ cubittandwest.co.uk

■ Legal advice should be taken to verify fixtures/fittings, planning, alterations and/or lease details

■ Appliances & services are untested, dimensions are approximate and floor plans are not to scale



40414592/20230626/KF/JH