



Price
£280,000

Freehold

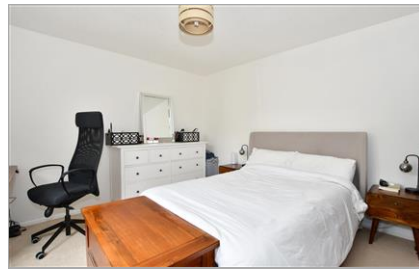
2x  1x  1x 

**St. Mary's Road,
Boxgrove, Chichester,
West Sussex, PO18**

OVER 60?

Secure this property
for up to **59% less!**

cubitt&west
Helping you move forwards



Main features

- Beautiful semi-detached bungalow in peaceful cul-de-sac
- Large lounge with gorgeous bay window
- Flexible bedrooms - one could be used as a child's room or home office
- Ample sized kitchen with great storage
- Excellent sized garden with amazing space
- Rural walks & activities nearby
- Close to the Goodwood Estate
- Easy access into Chichester

Accommodation

GROUND FLOOR

Entrance Hall

Lounge: 17'9 x 13'11 (5.41m x 4.24m)

Kitchen: 12'0 x 7'9 (3.66m x 2.36m)

Bedroom 1: 13'1 x 12'0 (3.99m x 3.66m)

Bedroom 2: 8'8 x 7'9 (2.64m x 2.36m)

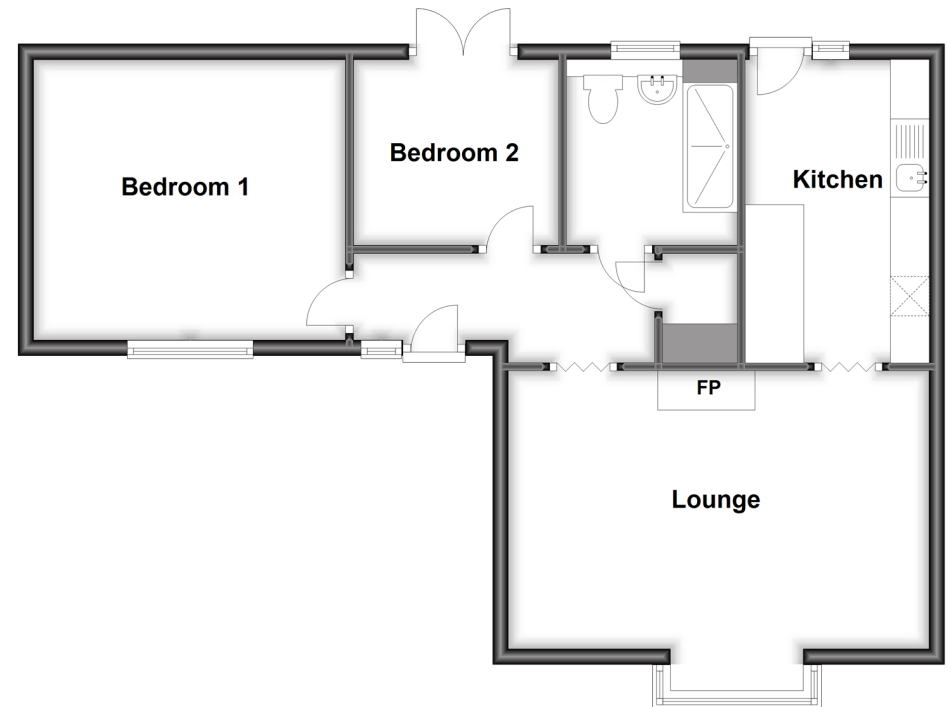
Shower Room: 7'9 x 7'3 (2.36m x 2.21m)

OUTSIDE

Front & Rear Gardens

Ground Floor

Approx. 63.0 sq. metres (678.3 sq. feet)



Call Chichester - 01243 786581 ■ cubittandwest.co.uk

■ Legal advice should be taken to verify fixtures/fittings, planning, alterations and/or lease details
 ■ Through a Homewise Home For Life Plan people aged 60+ can secure this property for up to 59% less, by purchasing a Lifetime Lease.

■ Appliances & services are untested, dimensions are approximate and floor plans are not to scale



40414600/20230621/RC/RC