



Price

£400,000

Leasehold

4x  3x  1x 

**Lillywhite Road,
Chichester, West
Sussex, PO18**

OVER 60?

Secure this property
for up to **59% less!**

cubitt&west
Helping you move forwards



Main features

- Chain free semi-detached house with spacious lounge
- Charming, private development with communal green & park nearby
- Easy access to Goodwood & into the city centre
- Only a short distance to the local shops
- Ideal family home
- Benefits from a large lounge with Velux windows

Accommodation

GROUND FLOOR

Hallway

Lounge: 14'7 x 11'8 (4.45m x 3.56m)

Cloakroom

Kitchen: 15'7 x 10'5 (4.75m x 3.18m)

FIRST FLOOR

Landing

Bedroom 2: 12'5 x 10'7 (3.79m x 3.23m)

En-Suite Shower Room: 7'5 x 5'1 (2.26m x 1.55m)

Bedroom 3: 14'7 x 11'2 (4.45m x 3.41m)

Family Bathroom: 7'5 x 5'1 (2.26m x 1.55m)

SECOND FLOOR

Landing

Bedroom 1: 14'2 into recess x 12'8 (4.32m x 3.86m)

En-Suite Shower Room: 8'7 x 4'2 (2.62m x 1.27m)

Bedroom 4: 6'7 x 5'5 (2.01m x 1.65m)

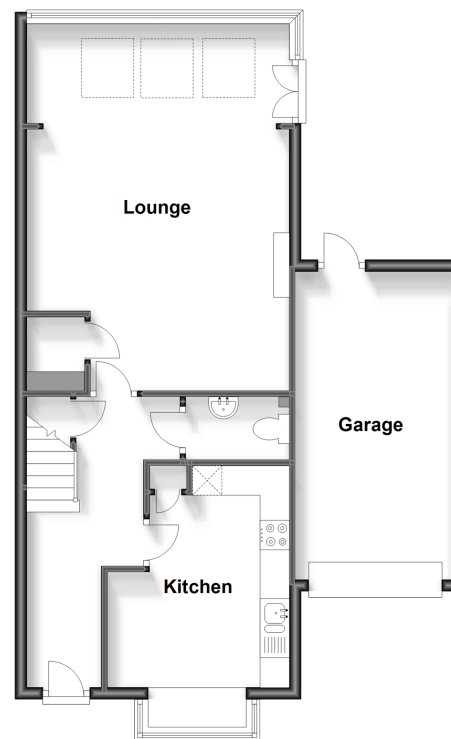
OUTSIDE

Garage & Off Road Parking

Front & Rear Gardens

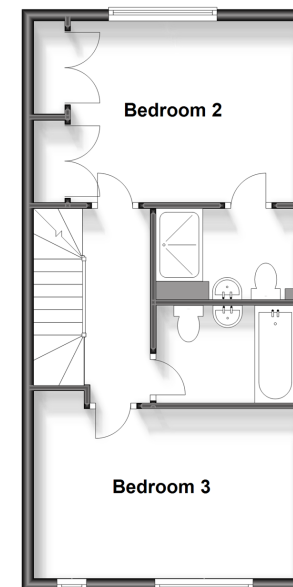
Ground Floor

Approx. 65.5 sq. metres (705.5 sq. feet)



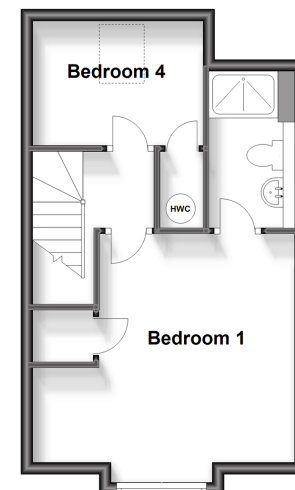
First Floor

Approx. 42.3 sq. metres (455.2 sq. feet)



Second Floor

Approx. 32.9 sq. metres (354.0 sq. feet)



Call Chichester - 01243 786581 ■ cubittandwest.co.uk

■ Legal advice should be taken to verify fixtures/fittings, planning, alterations and/or lease details
 ■ Through a Homewise Home For Life Plan people aged 60+ can secure this property for up to 59% less, by purchasing a Lifetime Lease.

■ Appliances & services are untested, dimensions are approximate and floor plans are not to scale



40414720/20240126/JH/RC