



**Price**

**£350,000**

**Leasehold**

2x  1x  1x 

**Blackboy Court, Main  
Road, Fishbourne, West  
Sussex, PO18**

**OVER 60?**

Secure this property  
for up to **59% less!**

**cubitt&west**  
Helping you move forwards





## Main features

- **Luxury ground floor apartment with brand new long lease**
- **Excellent public transport links**
- **Benefits from 2 allocated parking spaces**
- **High specification kitchen appliances & ample storage**
- **Bespoke development featuring recently renovated properties**

## Accommodation

### GROUND FLOOR

#### Hallway

Kitchen/Lounge: 17'8 x 17'7 (5.39m x 5.36m)

Bedroom 1: 15'6 x 9'6 (4.73m x 2.90m)

Bedroom 2: 13'4 x 6'8 (4.07m x 2.03m)

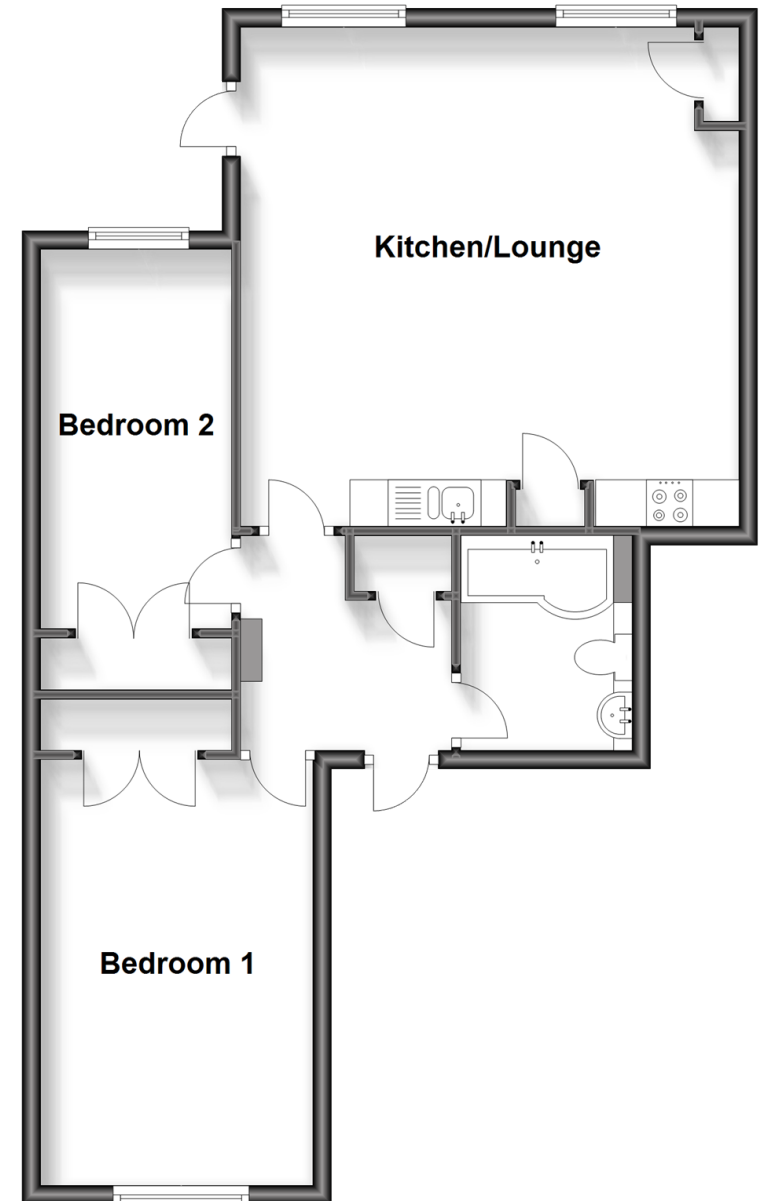
Bathroom: 7'6 x 6'1 (2.29m x 1.86m)

### OUTSIDE

Allocated Parking

Communal Gardens

**Ground Floor**  
Approx. 64.5 sq. metres (694.0 sq. feet)



**Call Chichester - 01243 786581 ■ [cubittandwest.co.uk](http://cubittandwest.co.uk)**

- Legal advice should be taken to verify fixtures/fittings, planning, alterations and/or lease details
- Appliances & services are untested, dimensions are approximate and floor plans are not to scale
- Through a Homewise Home For Life Plan people aged 60+ can secure this property for up to 59% less, by purchasing a Lifetime Lease.



40414757/20231012/KF/RC